



UNITED
NATIONS

EP

UNEP/MED WG.502/Inf.8



UNEP



UNITED NATIONS
ENVIRONMENT PROGRAMME
MEDITERRANEAN ACTION PLAN

27 May 2021
Original: English

Fifteenth Meeting of SPA/BD Focal Points

Videoconference, 23-25 June 2021

Agenda item 4: Progress report on activities carried out to implement the Biodiversity and Ecosystems core theme since the Fourteenth meeting of SPA/BD Focal Points

Pocket identification guide of main vulnerable species incidentally caught in fisheries of Croatia, Italy, Morocco, Tunisia, and Turkey

Note:

The designations employed and the presentation of the material in this document do not imply the expression of any opinion whatsoever on the part of Specially Protected Areas Regional Activity Centre (SPA/RAC) and United Nations Environment Programme concerning the legal status of any State, Territory, city or area, or of its authorities, or concerning the delimitation of their frontiers or boundaries.

Note by the Secretariat

1. These pocket identification guides have been developed to support the monitoring of bycatch of vulnerable species in Mediterranean fisheries in Croatia, Italy, Morocco, Tunisia, and Turkey.
2. The guides have been produced within the context of the MedBycatch project (Phase 1 and 2) “Understanding Mediterranean multi-taxa ‘bycatch’ of vulnerable species and testing mitigation– a collaborative approach” funded by MAVA Foundation through a partnership between the Agreement on the Conservation of Cetaceans of the Black Sea, Mediterranean Sea and contiguous Atlantic area (ACCOBAMS), the General Fisheries Commission for the Mediterranean (GFCM) of the Food and Agriculture Organization of the United Nations (FAO), the Regional Activity Centre for Specially Protected Areas of the United Nations Environment/Mediterranean Action Plan (SPA/RAC), International Union for Conservation of Nature – Centre for Mediterranean Cooperation (IUCN-Med), BirdLife Europe and Central Asia (BL ECA), the Mediterranean Association to Save the Sea Turtles (MEDASSET) and the Mediterranean World Wildlife Fund (WWF).
3. The compilation and final editing of these guides has been coordinated by IUCN-Med with the support of all the project’ partners and the Mediterranean experts involved within the MedBycatch Project.
4. These guides have been developed to provide the observers on board fishing vessels and fishers with identification assistance and general information about main vulnerable species potentially caught as bycatch in their country and act as a complementary tool to the most comprehensive ID guide of Mediterranean vulnerable species: “Guide of vulnerable species incidentally caught in Mediterranean fisheries” (UNEP/MED WG.502/Inf.7)
5. The present document includes the English version of the:
 - a. Pocket identification guide of main vulnerable species incidentally caught in Croatian fisheries (also available [Croatian](#))
 - b. Pocket identification guide of main vulnerable species incidentally caught in Italian fisheries (also available in [Italian](#))
 - c. Pocket identification guide of main vulnerable species incidentally caught in Moroccan fisheries (also available in [French](#) with Arabic species names)
 - d. Pocket identification guide of main vulnerable species incidentally caught in Tunisian fisheries (also available in [French](#) with Arabic species names)
 - e. Pocket identification guide of main vulnerable species incidentally caught in Turkish fisheries (also available in [Turkish](#))
6. These guides complement the document Monitoring the incidental catch of vulnerable species in Mediterranean and Black Sea fisheries - methodology for data collection (UNEP/MED WG.502/Inf.6)

POCKET IDENTIFICATION GUIDE OF MAIN VULNERABLE SPECIES INCIDENTALLY CAUGHT IN CROATIAN FISHERIES

Simplified guide adapted for Croatia (GSA 17) from the Identification guide of vulnerable species incidentally caught in Mediterranean fisheries



MARINE MAMMALS



Stenella coeruleoalba

Striped dolphin /
prugasti dupin
Ad: 1.8 – 2.6 m
NB: 85 – 95 cm



Glo Med



Tursiops truncatus

Common bottlenose dolphin /
dobri dupin
♂: 2.5 – 3.9 m
♀: 2.2 – 3.2 m
NB: 1 – 1.2 m



Glo Med



SEABIRDS



Winter

Summer

LC *Larus michahellis*
Yellow-legged gull / galeb klaukavac
Glo Wingspan: 120 – 140 cm



Winter

Summer

VU *Larus audouinii*
Audouin's gull / sredozemni galeb
Glo W: 117 – 128 cm



LC *Calonectris diomedea*
Scopoli's shearwater / kaukal
Glo W: 112 – 122 cm



Winter

Summer

LC *Larus ridibundus*
Black-headed gull / riječni galeb
Glo W: 86 – 99 cm



SEABIRDS



Juvenile

Adult

LC

Gulosus aristotelis desmarestii

European shag / morski vranac (sredozemna podvrsta)

Glo W: 115 – 125 cm



Winter

Summer

LC

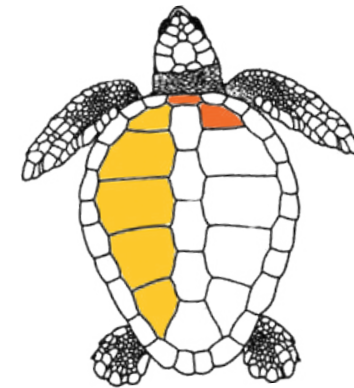
Thalasseus sandvicensis

Sandwich tern / dugokljuna čigra

Glo W: 85 – 97 cm



SEA TURTLES



VU LC

Glo Med



Caretta caretta

Loggerhead turtle / glavata želva

♂: 75 – 80 cm; ♀: 66 – 85 cm



LC

Phalacrocorax carbo

Great Cormorant / veliki vranac

Glo W: 77 – 94 cm



Summer

Winter

LC

Sterna hirundo

Common tern / crvenokljuna čigra

Glo W: 70 – 80 cm

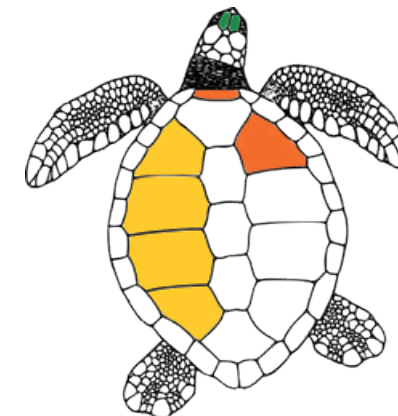


VU

Puffinus yelkouan

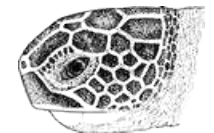
Yelkouan shearwater / gregula

Glo W: 70 – 84 cm



EN

Glo



Chelonia mydas

Green turtle / zelena želva

Ad (♂ and ♀): 80 – 120 cm

CHONDRICHTYANS



***Alopias vulpinus* – ALV**

Common thresher / pas lisica
Ad: up to 6 m



Glo Med

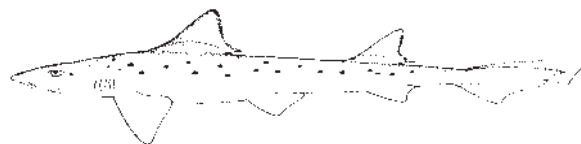


***Isurus oxyrinchus* – SMA**

Shortfin mako / dugonosa psina
Ad: up to 4.5m



Glo Med



***Mustelus punctulatus* – MPT**

Blackspotted smooth-hound /
pas mekaš pjegavi
Ad: up to 1.9 m



Glo Med



***Hexanchus griseus* – SBL**

Bluntnose six-gill shark / volonja
Ad: up to 5 m



Glo Med



***Galeorhinus galeus* – GAG**

Tope shark / butor
Ad: up to 1.6m



Glo Med

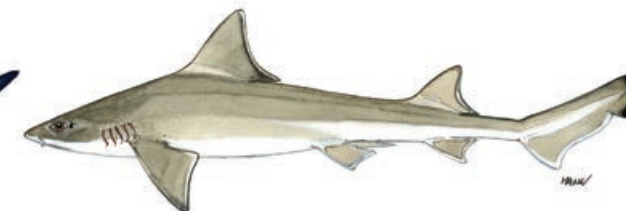


***Prionace glauca* – BSH**

Blue shark / modrulj
Ad: up to 4 m



Glo Med



***Mustelus mustelus* – SMD**

Smooth-hound / pas mekaš
Ad: up to 2 m



Glo Med



***Squalus acanthias* – DGS**

Picked dogfish / kostelj piknjavac
Ad: up to 2 m



Glo Med



***Scyliorhinus canicula* – SYC**

Small-spotted catshark / mačka bljedica
Ad: up to 1 m (60 cm in Mediterranean)



Glo Med



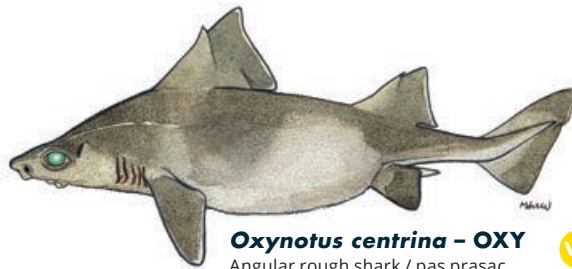
***Cetorhinus maximus* – BSK**

Basking shark / golema psina
Ad: up to 10 m



Glo Med

CHONDRICHTYANS



Oxynotus centrina – OXY
Angular rough shark / pas prasac
Ad: up to 1.5 m

VU CR

Glo Med



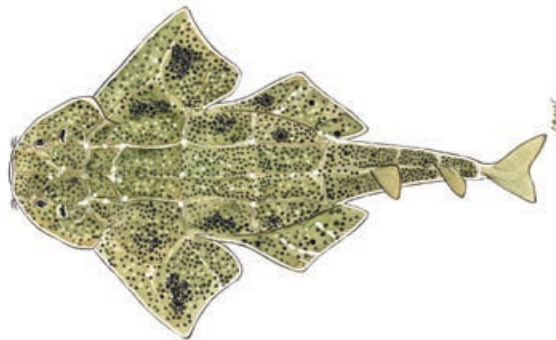
Raja asterias – JRS
Mediterranean starry ray /
raža zvjezdopjega
Ad: up to 80 cm in total length

NT NT
Glo Med



Raja miraletus – JAI
Brown ray / rača modropjega
Ad: up to 70 cm in total length

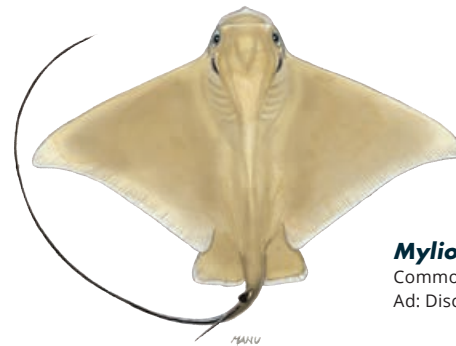
LC LC
Glo Med



Squatina squatina – AGN
Angel shark / sklat sivac
Ad: up to 2.5 m total length

CR CR

Glo Med



Myliobatis aquila – MYL
Common eagle ray / golub
Ad: Disc wide up to 1.5 m

DD VU
Glo Med



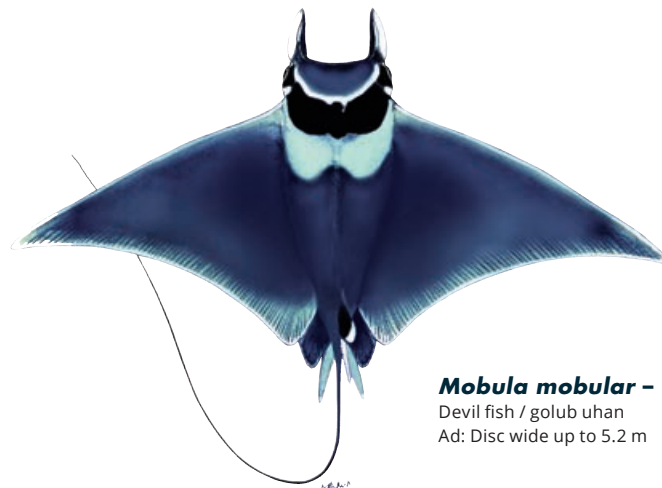
Dasyatis pastinaca – JDP
Common stingray / žutuga
Ad: Disc wide up to 0.68m

DD VU
Glo Med



Raja clavata – RJC
Thornback ray / rača kamenica
Ad: up to 90-130 cm in total length

NT NT
Glo Med



Mobula mobular – RMM
Devil fish / golub uhan
Ad: Disc wide up to 5.2 m

EN EN

Glo Med



Torpedo marmorata – TTR
Marbled electric ray / drhtulja
Ad: up to 1 m in total length

DD LC
Glo Med

SPONGES



Massive keratose sponges – KERA



Sarcotragus sp.



Sarcotragus sp.



Hippospongia communis



Ircinia variabilis

Globular sponges – GLOS



Suberites domuncula



Tethya aurantium



Therea spp.

Massive Mediterranean stony sponge – PETR



Petrosia ficiformis (burgundy morph)

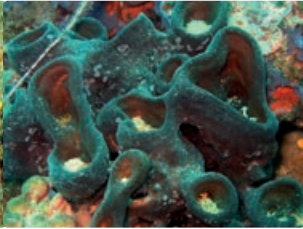


Petrosia ficiformis (white morph)

Lamellate to cup-shaped sponges – LAMS



Spongia lamella



Calyx nicaeensis

Arborescent sponges – ARBS



Axinella sp.

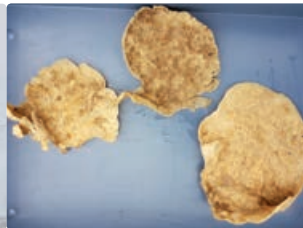


Axinella cannabina

Fan-shaped sponges – FANS



Phakellia ventilabrum



Phakellia robusta

Massive, (sub-) spherical hard sponges (*Geodia* spp.) – GEOD



Geodia cydonium

Massive-tubular gold sponges (*Aplysina* spp.) – APLY



Aplysina spp.

Lamellate rock sponges (*Leiodermatium* sp.) – ROCK



Leiodermatium pfeifferae

Other massive sponges (to be recorded as "Other massive") – OTHR



Agelas oroides

Birds' nest glass sponge – BIRD



Pheronema carpenteri

Felt vase glass sponge – FELT



Asconema setubalense

CORALS

Soft corals – SOFT



Alcyonium palmatum

Thick and tall red, yellow fan-shaped gorgonians – FANG



Acanthogorgia hirsuta

Paramuricea clavata

VU

Seapens – PENS



Pteroeides spinosum and *Pennatula* spp.

Bamboo corals – BAMB



Isidella elongata

CR

Bright yellow or salmon-pink hard corals (*Dendrophyllia* spp.) – DEND



Dead *dendrophyllids*

Dendrophyllia cornigera

EN

Dendrophyllia ramea

VU

Thin, delicate white, reddish, yellow fan-shaped gorgonians – THIG



Paramuricea macrospina

Precious red coral – REDC



Corallium rubrum

EN

Flexible white and salmon-pink fan-shaped gorgonians (*Eunicella* spp.) – EUNI



Eunicella cavolini

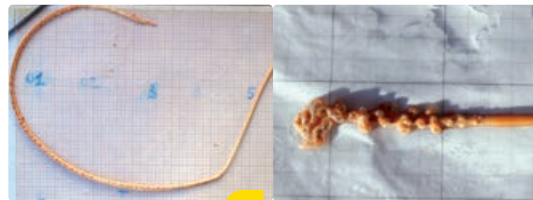
Eunicella verrucosa

Salmon-pink, brittle fan-shaped gorgonians – CALL



Callogorgia verticillata

White, stem-like sea pens – STEM

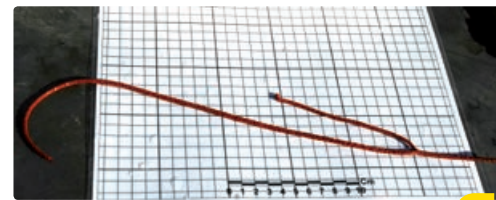


Funiculina quadrangularis

Kophobelemnion stelliferum

VU

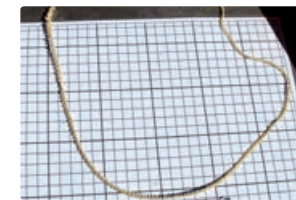
Candelabrum-shaped, red gorgonians – ELLP



Ellisella paraplexauroides

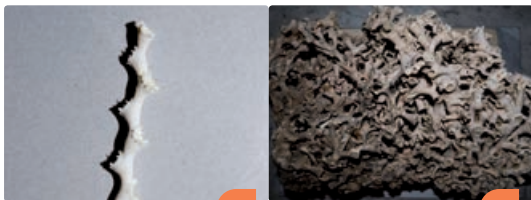
VU

Tall, white or yellow whip gorgonians (*Viminella flagellum*) – VIMF



Viminella flagellum

White corals – WHIT



Madrepora oculata

EN

Lophelia pertusa

EN

Colonial hard corals – CLAD



Cladocora caespitosa

EN

Arborescent black corals – BLAC



Antipathella subpinnata

Parantipathes larix

Leiopathes glaberrima

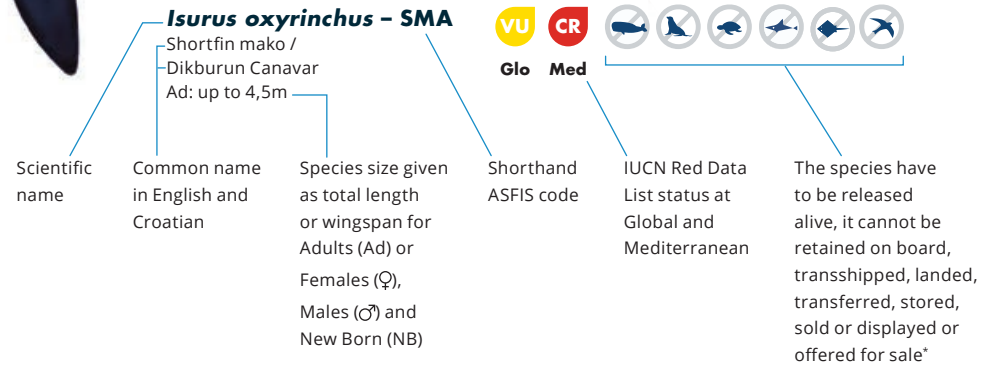
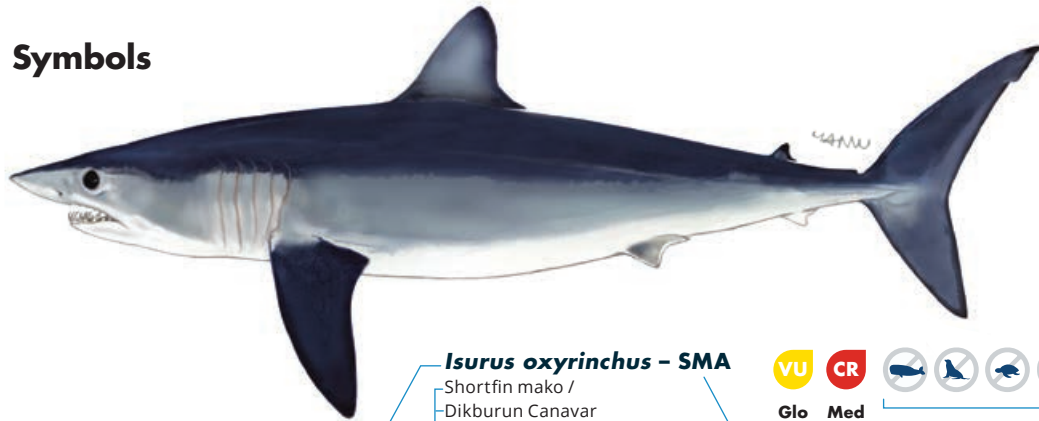
EN

Antipathes dichotoma

Abbreviations

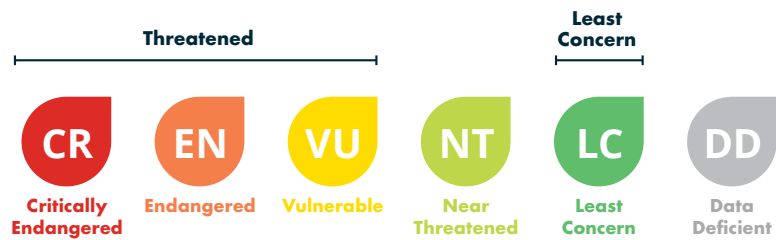
Ad: Adult
 ♂: Male
 ♀: Female
 NB: New Born
 W: Wingspan

Symbols



Key to IUCN Red List category symbols

For each species sheets, the IUCN categories relating to the conservation status both globally (Glo) and Mediterranean (Med) level are reported, according to the following scheme:



Geographical subarea (GSA) 17 refers to the Northern Adriatic Sea. If the incidentally caught species is not included in this guide, please refer to the **Identification guide of vulnerable species incidentally caught in Mediterranean fisheries**, which also provides detailed information on the conservation status, regulations and protection of each species (under ACCOBAMS, SPA/BD Protocol, CITES, CMS, GFCM, IUCN). Illustration source of sharks and rays: FAO Original scientific illustrations archive. Reproduced with permission.

* GFCM recommendations related to the management and conservation of vulnerable species in the GFCM area of application: seabirds (Rec. GFCM/35/2011/3); sea turtles (Rec. GFCM/35/2011/4); cetaceans (Rec. GFCM/36/2012/2; Res. GFCM/43/2019/2); sharks and rays (Rec. GFCM/36/2012/3; Rec. GFCM/42/2018/2) and corals (Res. GFCM/43/2019/6); Ordinance on strictly protected species (Official Gazette 144/2013)



QR Code

POCKET IDENTIFICATION GUIDE OF MAIN VULNERABLE SPECIES INCIDENTALLY CAUGHT IN ITALIAN FISHERIES

Simplified guide adapted for Italian (GSA 18) from the Identification guide of vulnerable species incidentally caught in Mediterranean fisheries



MARINE MAMMALS



Tursiops truncatus

Common bottlenose dolphin /
Tursiope
♂: 2.5 - 3.9 m
♀: 2.2 - 3.2 m
NB: 1 - 1.2 m



Glo Med



**Stenella
coeruleoalba**

Striped dolphin /
Stenella striata
Ad: 1.8 - 2.6 m
NB: 85 - 95 cm



Glo Med



Delphinus delphis

Short-beaked common
dolphin / Delfino comune
♂: 2.0 - 2.6 m / ♀: 2.4 m /
NB: 80 - 90 cm



Glo Med



Ziphius cavirostris

Cuvier's beaked whale /
Zifio
♂: up to 7.5 m
♀: up to 7 m
NB: 2 - 2.7 m



Glo Med



Grampus griseus

Risso's dolphin /
Grampo o Delfino di Risso
Ad: 3 - 4 m / NB: 1.2 - 1.5 m



Glo Med



Globicephala melas

Long-finned pilot whale /
Globicefalo
♂: 5.5 - 6.2 m / ♀: 4.5 - 5.5 m
NB: 1.7 - 1.8 m



Glo Med



Physeter macrocephalus

Sperm whale / Capodoglio
♂: 16 - 18 m / ♀: 11 - 12 m / NB: 3.3 - 4.2 m



Glo Med



Balaenoptera physalus

Fin whale / Balenottera comune
♂: 18 - 20 m / ♀: 20 - 22 m / NB: 6 - 6.5 m



Glo Med



SEABIRDS



LC *Larus michahellis*
Yellow-legged gull / Gabbiano reale
Glo Wingspan: 120 – 140 cm



VU *Larus audouinii*
Audouin's gull / Gabbiano corso
Glo W: 117 – 128 cm



LC *Phalacrocorax carbo*
Great Cormorant / Cormorano
Glo W: 77 – 94 cm



LC *Gulosus aristotelis desmarestii*
European shag / Marangone dal ciuffo
Glo W: 115 – 125 cm



VU *Puffinus yelkouan*
Yelkouan shearwater / Berta minore
Glo W: 70 – 84 cm



LC *Calonectris diomedea*
Scopoli's shearwater / Berta maggiore
Glo W: 112 – 122 cm



SEA TURTLES



VU **LC**
Glo **Med**
Caretta caretta
Loggerhead turtle / Tartaruga caretta
♂: 75 – 80 cm; ♀: 66 – 85 cm



EN
Glo
Chelonia mydas
Green turtle / Tartaruga verde
Ad (♂ and ♀): 80 – 120 cm



VU
Glo
Dermochelys coriacea
Leatherback sea turtle / Tartaruga liuto
Average adult length 1.4 – 1.6 m

CHONDRICHTYANS



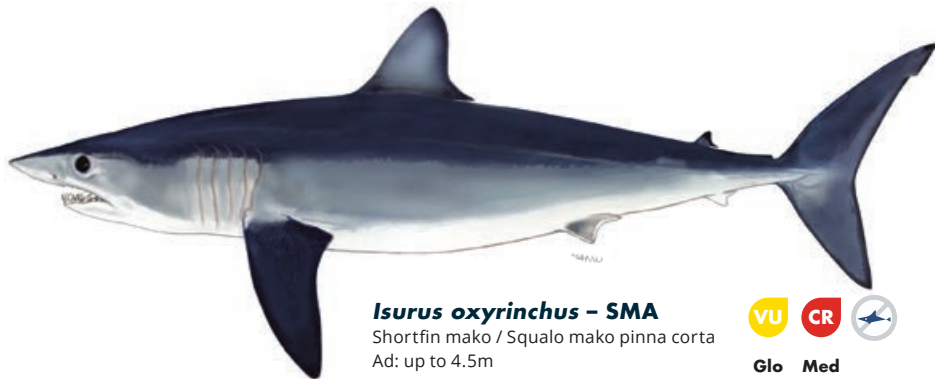
***Alopias vulpinus* - ALV**
Thresher shark / Squalo volpe
Ad: up to 6 m



***Galeorhinus galeus* - GAG**
Tope shark / Canesca
Ad: up to 1.6m



***Mustelus punctulatus* - MPT**
Blackspotted smooth-hound /
Palombo punteggiato
Ad: up to 1.9 m



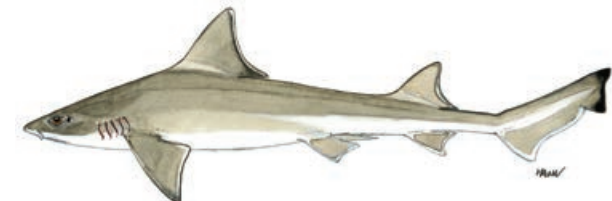
***Isurus oxyrinchus* - SMA**
Shortfin mako / Squalo mako pinna corta
Ad: up to 4.5m



***Mustelus asterias* - SDS**
Starry smooth-hound shark /
Palombo stellato
Ad: up to 1.4 m



***Hexanchus griseus* - SBL**
Bluntnose six-gill shark /
Squalo capopiatto
Ad: up to 5 m



***Mustelus mustelus* - SMD**
Smooth-hound / Palombo
Ad: up to 2 m



CHONDRICHTYANS



Galeus melastomus – SHO

Blackmouth catshark / Gattuccio boccanera
Ad: up to 90 cm



Glo Med



Scyliorhinus canicula – SYC

Small-spotted catshark / Gattuccio
Ad: up to 1 m (60 cm in Mediterranean)



Glo Med

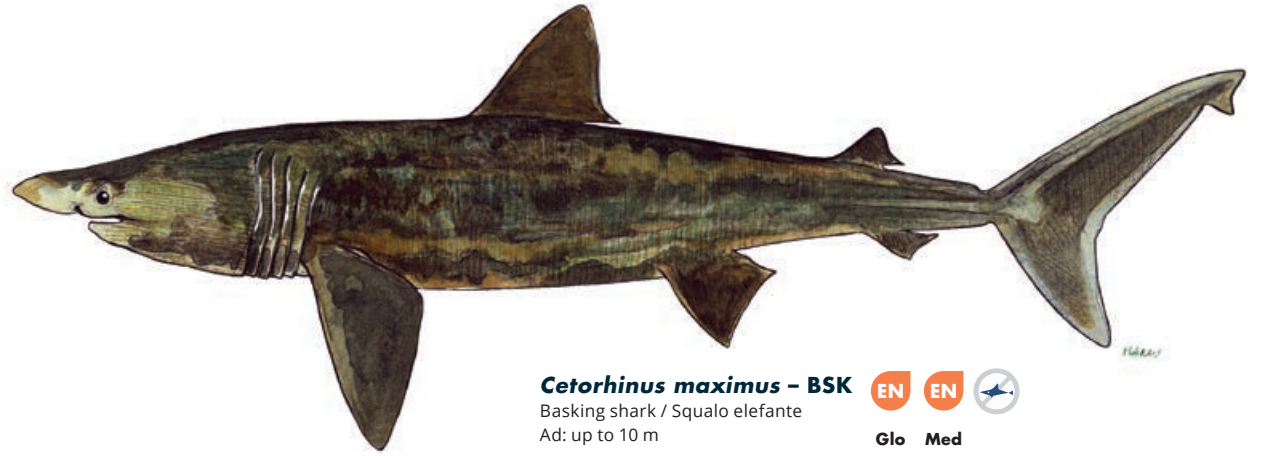


Scyliorhinus stellaris – SYT

Nursehound / Gattopardo
Ad: up to 1.7 m



Glo Med

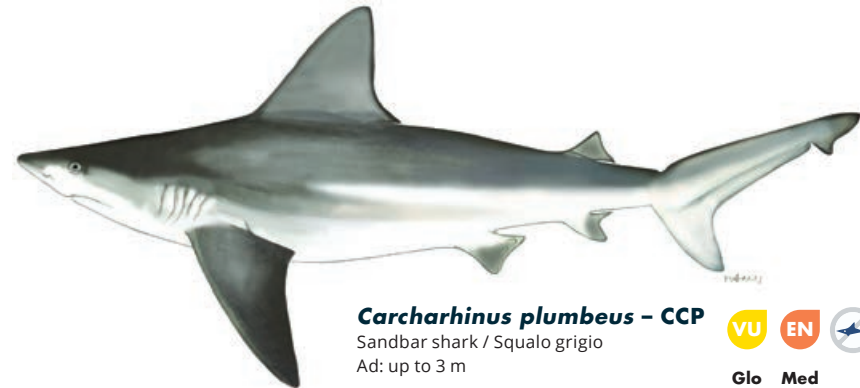


Cetorhinus maximus – BSK

Basking shark / Squalo elefante
Ad: up to 10 m



Glo Med

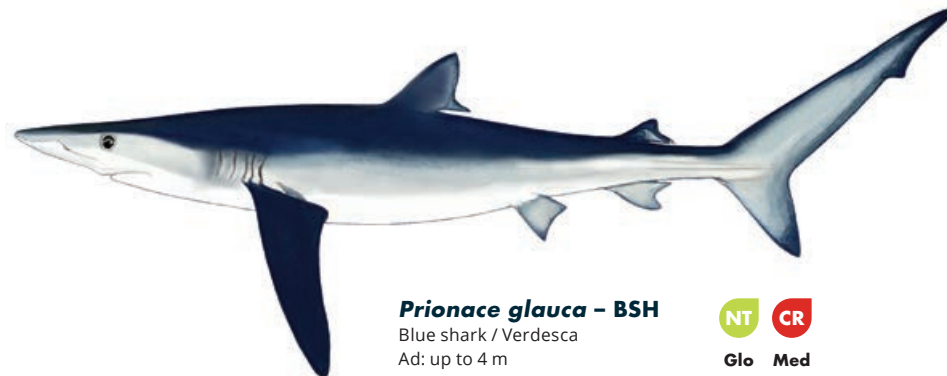


Carcharhinus plumbeus – CCP

Sandbar shark / Squalo grigio
Ad: up to 3 m



Glo Med



Prionace glauca – BSH

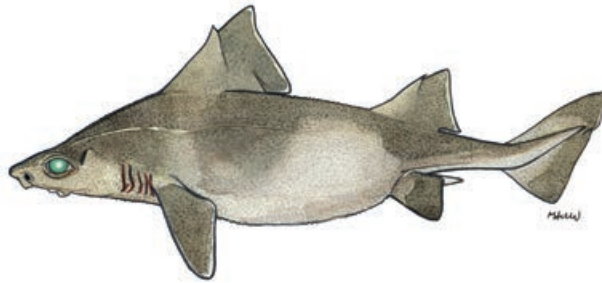
Blue shark / Verdesca
Ad: up to 4 m



Glo Med



CHONDRICTYANS



***Oxynotus centrina* – OXY**
 Angular rough shark / Pesce porco
 Ad: up to 1.5 m



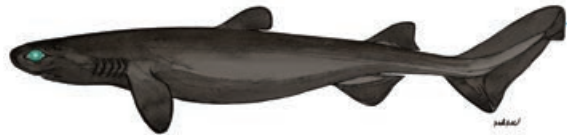
Glo Med



***Squalus acanthias* – DGS**
 Picked dogfish / Squalus acanthias
 Ad: up to 2 m



Glo Med



***Dalatias licha* – SCK**
 Kitefin shark / Zigrino
 Ad: up to 1.82 m



Med



***Squalus blainville* – QUB**
 Longnose spurdog / Spinarolo bruno
 Ad: 50 – 80 cm in total length,
 occasionally until 1.1 m



Glo Med



***Centrophorus cf uyato* – GUP**
 Gulper shark / Sagri
 Ad: up to 1.2 m



Glo Med



***Etmopterus spinax* – ETX**
 Velvet belly / Sagri nero o Moretto
 Ad: up to 60 cm



Glo Med



***Heptranchias perlo* – HXT**
 Sharpnose sevengill shark /
 Squalo manzo
 Ad: up to 1.4m



Glo Med

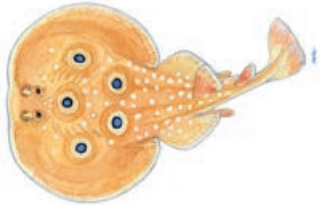
CHONDRICHTYANS



Torpedo marmorata – TTR

Marbled electric ray /
Torpedine mazzata
Ad: up to 1 m in total length

DD LC
Glo Med



Torpedo torpedo – TTV

Common torpedo /
Torpedine occhiuta
Ad: 60 cm in total length

DD LC
Glo Med

Pteroplatytrygon violacea – PLS

Pelagic stingray /
Trigone viola
Ad: up to 80 cm
total length

LC LC
Glo Med



Tetronarce nobiliana – TTO

Electric ray /
Torpedine nera
Ad: up to 1.8m

DD LC
Glo Med



Leucoraja circularis – RJ1

Sandy ray / Razza rotonda
Ad: up to 1.2 m total length

EN CR

Glo Med



Raja asterias – JRS

Mediterranean
starry ray /
Razza stellata
Ad: up to 80 cm in total length

NT NT
Glo Med



Raja clavata – RJC

Thornback ray / Razza chiodata
Ad: up to 90-130 cm in total length

NT NT
Glo Med



Raja miraletus – JAI

Brown ray / Razza quattrocchi
Ad: up to 70 cm in total length

LC LC
Glo Med



Raja polystigma – RJM

Speckled skate / Razza polistimma
Ad: up to 70 cm

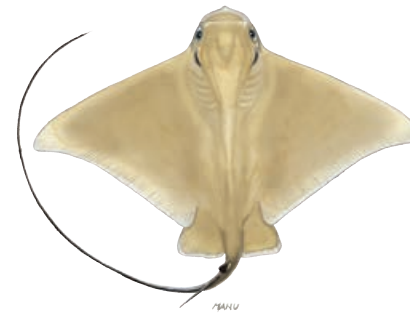
LC LC
Glo Med



Dasyatis pastinaca – JDP

Common stingray / Pastinaca
Ad: Disc wide up to 68 cm

DD VU
Glo Med



Myliobatis aquila – MYL

Common eagle ray / Aquila di mare
Ad: Disc wide up to 1.5 m

DD VU
Glo Med



Mobula mobular – RMM

Devil fish / Mobula o Diavolo di mare
Ad: Disc wide up to 5.2 m

EN EN

Glo Med



Dipturus oxyrinchus – RJO

Pocheteau noir /
Razza monaca
Ad: Disc wide up to 1.5 m

NT NE
Glo Med



Chimaera monstrosa – CMO

Rabbit fish / Chimera
Ad: up to 1 m

NT NT
Glo Med

SPONGES



Massive keratose sponges – KERA



Sarcotragus sp.



Sarcotragus sp.



Hippospongia communis



Ircinia variabilis

Globular sponges – GLOS



Suberites domuncula



Tethya aurantium



Therea spp.

Massive Mediterranean stony sponge – PETR

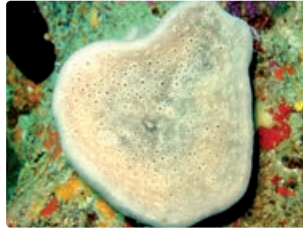


Petrosia ficiformis (burgundy morph)

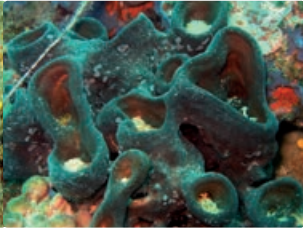


Petrosia ficiformis (white morph)

Lamellate to cup-shaped sponges – LAMS



Spongia lamella



Calyx nicaeensis

Arborescent sponges – ARBS



Axinella sp.

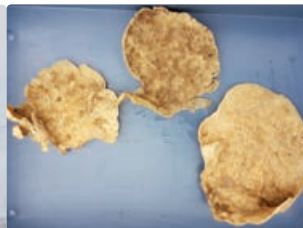


Axinella cannabina

Fan-shaped sponges – FANS



Phakellia ventilabrum



Phakellia robusta

Massive, (sub-) spherical hard sponges (*Geodia* spp.) – GEOD



Geodia cydonium

Massive-tubular gold sponges (*Aplysina* spp.) – APLY



Aplysina spp.

Lamellate rock sponges (*Leiodermatium* sp.) – ROCK



Leiodermatium pfeifferae

Other massive sponges (to be recorded as "Other massive") – OTHR



Agelas oroides

Birds' nest glass sponge – BIRD



Pheronema carpenteri

Felt vase glass sponge – FELT



Asconema setubalense

CORALS

Soft corals – SOFT



Alcyonium palmatum

Thick and tall red, yellow fan-shaped gorgonians – FANG



Acanthogorgia hirsuta

Paramuricea clavata

VU

Seapens – PENS



Pteroeides spinosum and *Pennatula* spp.

Bamboo corals – BAMB



Isidella elongata

CR

Bright yellow or salmon-pink hard corals (*Dendrophyllia* spp.) – DEND



Dead *dendrophyllids*

Dendrophyllia cornigera

EN

Dendrophyllia ramea

VU

Thin, delicate white, reddish, yellow fan-shaped gorgonians – THIG



Paramuricea macrospina

Precious red coral – REDC



Corallium rubrum

EN

Flexible white and salmon-pink fan-shaped gorgonians (*Eunicella* spp.) – EUNI



Eunicella cavolini

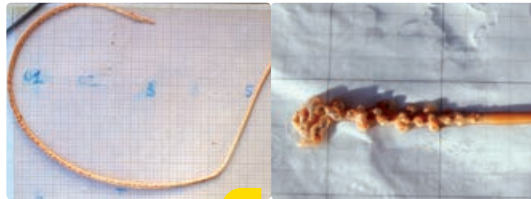
Eunicella verrucosa

Salmon-pink, brittle fan-shaped gorgonians – CALL



Callogorgia verticillata

White, stem-like sea pens – STEM

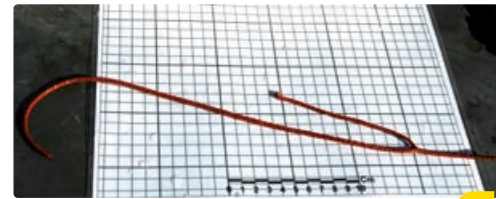


Funiculina quadrangularis

Kophobelemnion stelliferum

VU

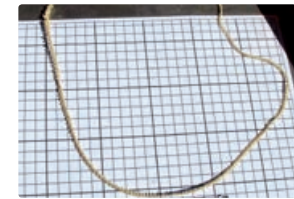
Candelabrum-shaped, red gorgonians – ELLP



Ellisella paraplexauroides

VU

Tall, white or yellow whip gorgonians (*Viminella flagellum*) – VIMF



Viminella flagellum

White corals – WHIT



Madrepora oculata

EN

Lophelia pertusa

EN

Colonial hard corals – CLAD



Cladocora caespitosa

EN

Arborescent black corals – BLAC



Antipathella subpinnata

Parantipathes larix

Leiopathes glaberrima

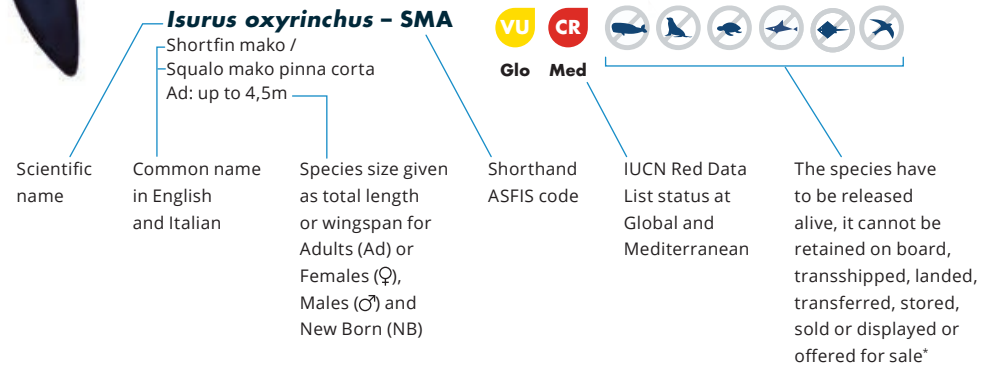
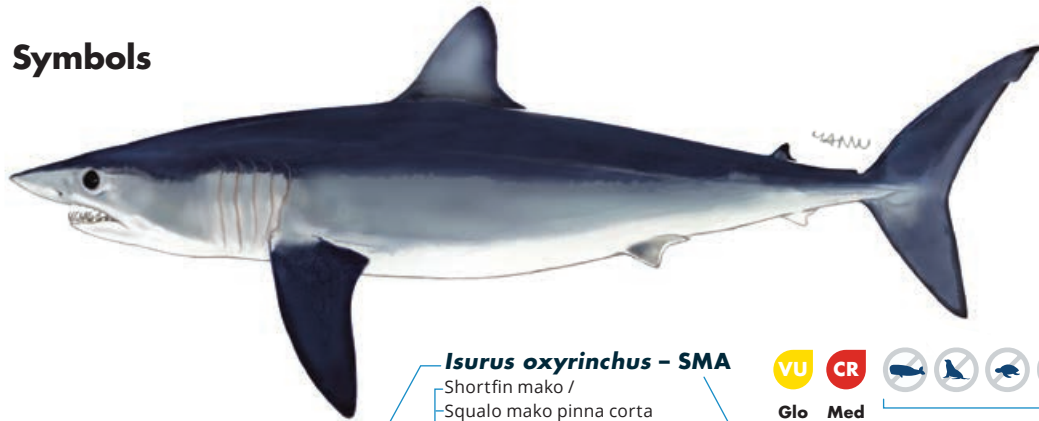
EN

Antipathes dichotoma

Abbreviations

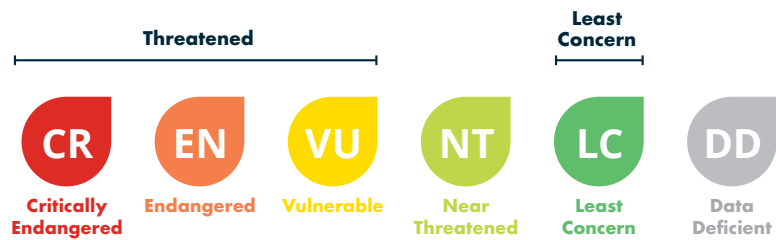
Ad: Adult
 ♂: Male
 ♀: Female
 NB: New Born
 W: Wingspan

Symbols



Key to IUCN Red List category symbols

For each species sheets, the IUCN categories relating to the conservation status both globally (Glo) and Mediterranean (Med) level are reported, according to the following scheme:



Geographical subarea (GSA) 18 refers to the Southern Adriatic Sea. If the incidentally caught species is not included in this guide, please refer to the **Identification guide of vulnerable species incidentally caught in Mediterranean fisheries**, which also provides detailed information on the conservation status, regulations and protection of each species (under ACCOBAMS, SPA/BD Protocol, CITES, CMS, GFCM, IUCN). Illustration source of sharks and rays: FAO Original scientific illustrations archive. Reproduced with permission.

* GFCM recommendations related to the management and conservation of vulnerable species in the GFCM area of application: seabirds (Rec. GFCM/35/2011/3); sea turtles (Rec. GFCM/35/2011/4); cetaceans (Rec. GFCM/36/2012/2; Res. GFCM/43/2019/2); sharks and rays (Rec. GFCM/36/2012/3; Rec. GFCM/42/2018/2) and corals (Res. GFCM/43/2019/6).



QR Code

POCKET IDENTIFICATION GUIDE OF MAIN VULNERABLE SPECIES INCIDENTALLY CAUGHT IN MOROCCAN FISHERIES

Simplified guide adapted for Morocco (GSA 3) from the Identification guide of vulnerable species incidentally caught in Mediterranean fisheries



IN COLLABORATION WITH



FUNDED BY



MARINE MAMMALS



Stenella coeruleoalba

Striped dolphin /
الدلفين الأزرق والأبيض (المخطط)
Ad: 1.8-2.6 m
NB: 85-95 cm



Glo Med



Grampus griseus

Risso's dolphin /
دلفين ريسو (غرامبوس)
Ad: 3 - 4 m / NB: 1.2 - 1.5 m



Glo Med



Delphinus delphis

Common dolphin /
الدلفين الشائع
♂: 2.0-2.6 m / ♀: 2.4 m /
NB: 80-90 cm



Glo Med



Globicephala melas

Long-finned pilot whale /
كروي الرأس الشائع (الحوث القاتم)
♂: 5.5-6.2 m / ♀: 4.5-5.5 m
NB: 1.7-1.8 m



Glo Med



Tursiops truncatus

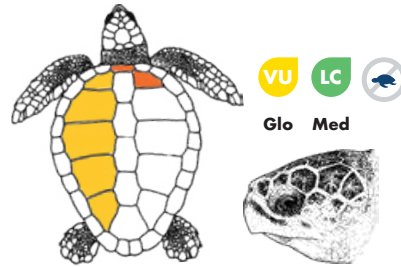
Common bottlenose dolphin /
الدلفين الكبير (ذو الأنف الزجاجي)
♂: 2.5 - 3.9 m / ♀: 2.2-3.2
NB: 1-1.2 m



Glo Med



SEA TURTLES



Glo Med

Caretta caretta

Loggerhead turtle / سلحفاة بحرية ضخمة الرأس
♂: 75-80 cm; ♀: 66-85 cm



Glo

Chelonia mydas

Green turtle / السلحفاة الخضراء
Ad (♂ and ♀): 80-120 cm



Glo

Dermochelys coriacea

Leatherback sea turtle /
سلحفاة المحيط جلدية الظهر
Average adult length 1.4-1.6 m



SEABIRDS



Winter

Summer



Larus michahellis

Yellow-legged gull /
نورس ميكاهيل
Wingspan: 1.2 - 1.4 m

Glo



Winter

Summer



Larus melanocephalus

Mediterranean gull /
نورس متوسطي
W: 94 - 102 cm

Glo



Winter

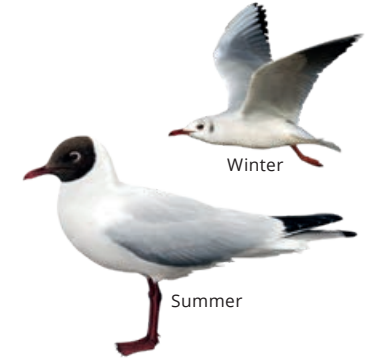
Summer



Larus audouinii

Audouin's gull /
نورس أودوين
W: 1.17 - 1.28 m

Glo



Winter

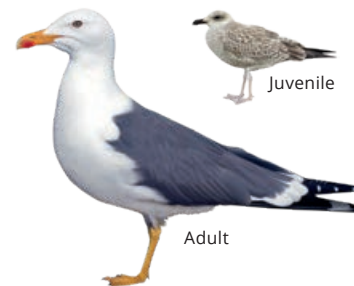
Summer



Larus ridibundus

Black-headed gull /
نورس أسود الرأس
W: 86 - 99 cm

Glo



Adult

Juvenile



Larus fuscus

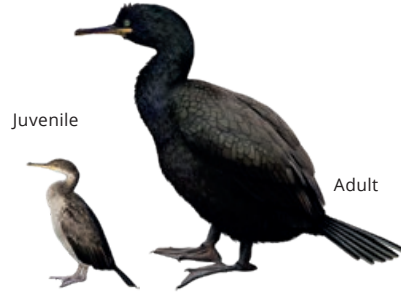
Lesser black-backed gull /
نورس أسمر
W: 1.44 - 1.66 m

Glo

SEABIRDS



LC *Phalacrocorax carbo*
Great Cormorant / غاق كبير
Glo W: 77 – 94 cm



LC *Gulosus aristotelis desmarestii*
European shag / غاق أرسطو
Glo W: 1.15 – 1.25 m



VU *Puffinus yelkouan*
Yelkouan shearwater / جلم ماء متوسطي
Glo W: 70 – 84 cm



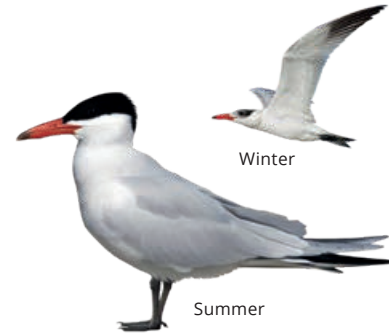
CR *Puffinus mauretanicus*
Balearic shearwater / جلم ماء موريطاني
Glo W: 78 – 90 cm



LC *Calonectris diomedea*
Scopoli's shearwater / جلم ماء سكوبولي
Glo W: 1.12 – 1.22 m



LC *Hydrobates pelagicus*
European storm petrel / AR: NA
Glo W: 37 – 41 cm



LC *Hydroprogne caspia*
Caspian tern / خرشنة قزوينية
Glo W: 96 – 111 cm



LC *Thalasseus sandvicensis*
Sandwich tern / خرشنة ساندويتش
Glo W: 85 – 97 cm



LC *Thalasseus bengalensis*
Lesser crested tern / خرشنة البنغال
Glo W: 76 – 82 cm



LC *Sternula albifrons*
Little tern / خرشنة صغيرة
Glo W: 41- 47 cm



LC *Sterna hirundo*
Common tern / خرشنة خطافية
Glo W: 70 – 80 cm

CHONDRICHTYANS



Mustelus asterias – SDS

Starry smooth-hound shark /
كلب نجمي (قطاط)
Ad: up to 1.4 m

LC VU
Glo Med



Prionace glauca – BSH

Blue shark / قرش أزرق (كلب بحر)
Ad: up to 4 m

NT CR
Glo Med



Galeorhinus galeus – GAG

Tope shark / مُتسوّلة (قطاط)
Ad: up to 1.6 m

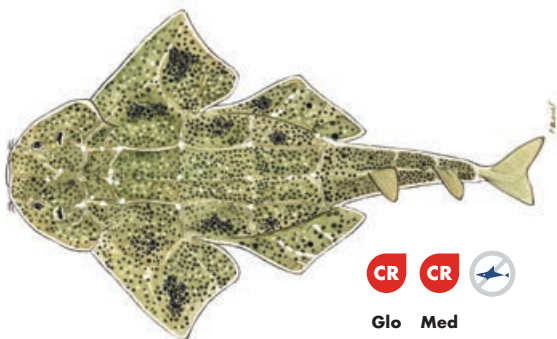
VU VU
Glo Med



Scyliorhinus canicula – SYC

Small-spotted catshark / قِط صغير مبرقش (كاتارلي / نمر)
Ad: up to 1 m (60 cm in Mediterranean)

LC LC
Glo Med



Squatina squatina – AGN

Angelshark / ملاك شائع (سفن وقاص)
Ad: up to 2.5 m total length

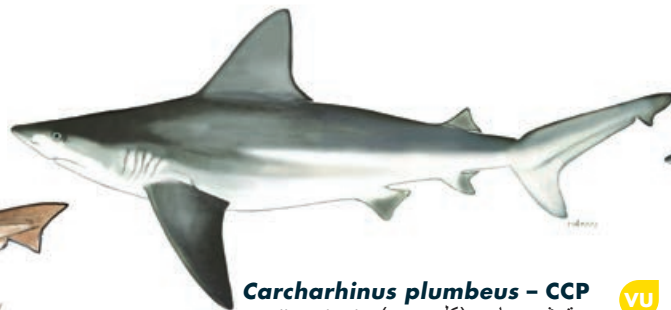
CR CR
Glo Med



Mustelus punctulatus – MPT

Blackspotted smooth-hound /
كلب مُنقَط (قطاط)
Ad: up to 1.9 m

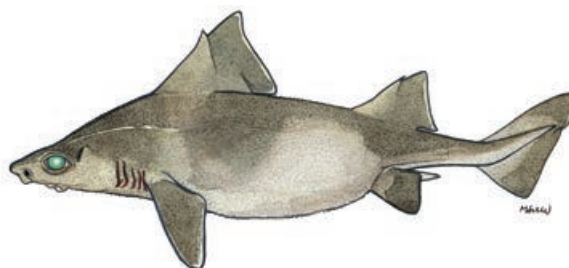
DD VU
Glo Med



Carcharhinus plumbeus – CCP

Sandbar shark / قرش رمادي (كلب بحر)
Ad: up to 3 m

VU EN
Glo Med



Oxynotus centrina – OXY

Angular rough shark /
حمار البحر (نعجة)
Ad: up to 1.5 m

VU CR
Glo Med



Dalatias licha – SCK

Kitefin shark / كوسج شراعي الزعنفة
Ad: up to 1.82 m

VU VU
Glo Med



Isurus oxyrinchus – SMA

Shortfin mako /
زرقايا (زرقايا)
Ad: up to 4.5 m

VU CR
Glo Med



Sphyrna zygaena – SPZ

Smooth hammerhead /
أبو مطرقة ناعم (قرش بومطرقة)
Ad: up to 5 m

VU CR
Glo Med



Squalus blainville – QUB

Longnose spurdog /
كلب أبو شوكة مُتأنف قطاط بوشوكة
Ad: 50 – 80 cm in total length,
occasionally until 1.1 m

DD DD
Glo Med

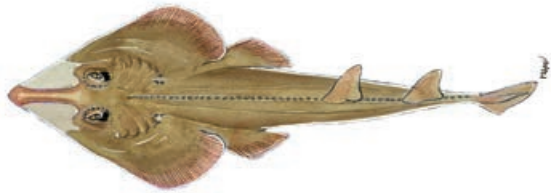


Hexanchus griseus – SBL

Bluntnose six-gill shark / كلب أبو ستة (الدودة)
Ad: up to 5 m

NT DD
Glo Med

CHONDRICHTYANS



Rhinobatos rhinobatos - RBC

Common guitarfish /
قيثارة شائعة (محرث / قرس)
Ad: 1.5 m in total length



Glo Med



Pteroplatytrygon violacea - PLS

Pelagic stingray /
راية لاسعة بنفسجية (الزرقايا)
Ad: Disc wide up to 80 cm



Glo Med

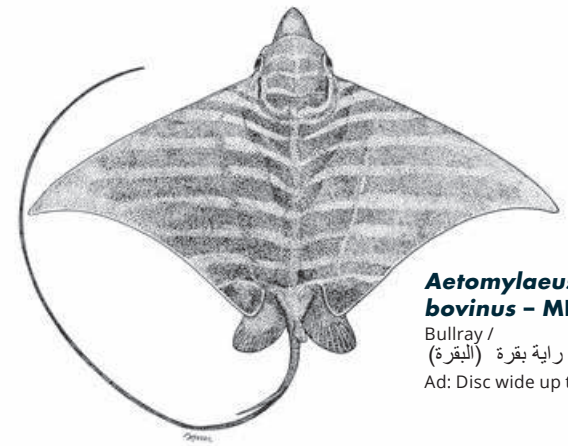


Dasyatis pastinaca - JDP

Common stingray /
راية لاسعة شائعة (حمام)
Ad: Disc wide up to 68 cm



Glo Med



Aetomylaeus bovinus - MPO

Bullray /
راية بقرة (البقرة)
Ad: Disc wide up to 2.2 m



Glo Med

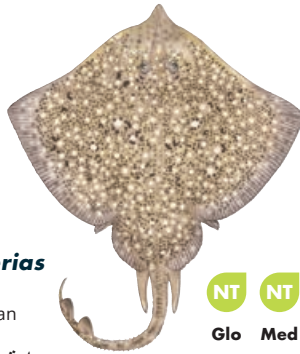


Glaucostegus halavi - RBH

Halavi ray /
قيثارة شائعة (محرث / قرس)
Ad: 1.2 m in total length
(probably up to 1.71 m)



Glo



Raja asterias - JRS

Mediterranean
starry ray /
راية مية (قرشلة)
Ad: up to 80 cm in total length



Glo Med

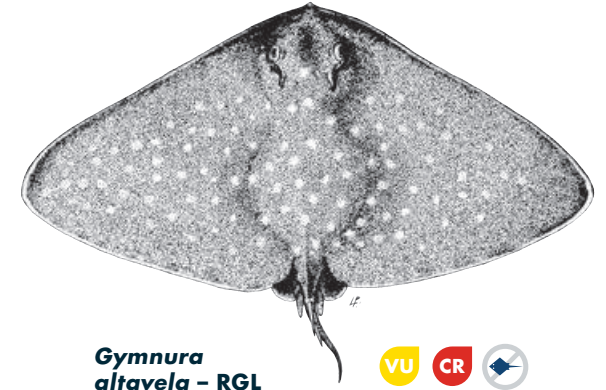


Raja brachyura - RJH

Blonde ray / AR: NA
Ad: up to 1.2 m
in total length



Glo Med



Gymnura altavela - RGL

Spiny butterfly ray /
راية الفراشة (حصيرة)
Ad: Disc wide up to 4 m, common 2 m



Glo Med



Leucoraja circularis - RJI

Sandy ray / راية رملية
Ad: up to 1.2 m total length



Glo Med



Raja miraletus - JAI

Brown ray / راية ام عيون (قرشلة)
Ad: up to 70 cm in total length



Glo Med



Raja montagui - RJM

Spotted ray / راية مبرقشة
Ad: up to 80 cm in total length



Glo Med



Raja clavata - RJC

Thornback ray /
راية مشوكة الظهر (قرشلة)
Ad: up to 90-130 cm in total length



Glo Med

SPONGES



Massive keratose sponges – KERA



Sarcotragus sp.



Sarcotragus sp.



Hippospongia communis



Ircinia variabilis

Globular sponges – GLOS



Suberites domuncula



Tethya aurantium



Therea spp.

Massive Mediterranean stony sponge – PETR

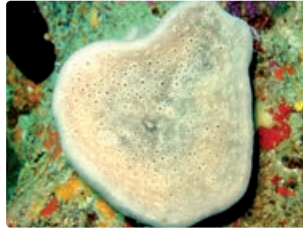


Petrosia ficiformis (burgundy morph)



Petrosia ficiformis (white morph)

Lamellate to cup-shaped sponges – LAMS



Spongia lamella



Calyx nicaeensis

Arborescent sponges – ARBS



Axinella sp.

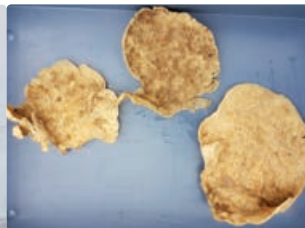


Axinella cannabina

Fan-shaped sponges – FANS



Phakellia ventilabrum



Phakellia robusta

Massive, (sub-) spherical hard sponges (*Geodia* spp.) – GEOD



Geodia cydonium

Massive-tubular gold sponges (*Aplysina* spp.) – APLY



Aplysina spp.

Lamellate rock sponges (*Leiodermatium* sp.) – ROCK



Leiodermatium pfeifferae

Other massive sponges (to be recorded as "Other massive") – OTHR



Agelas oroides

Birds' nest glass sponge – BIRD



Pheronema carpenteri

Felt vase glass sponge – FELT



Asconema setubalense

CORALS

Soft corals – SOFT



Alcyonium palmatum

Thick and tall red, yellow fan-shaped gorgonians – FANG



Acanthogorgia hirsuta

Paramuricea clavata

VU

Seapens – PENS



Pteroeides spinosum and *Pennatula* spp.

Bamboo corals – BAMB



Isidella elongata

CR

Bright yellow or salmon-pink hard corals (*Dendrophyllia* spp.) – DEND



Dead *dendrophyllids*

Dendrophyllia cornigera

EN

Dendrophyllia ramea

VU

Thin, delicate white, reddish, yellow fan-shaped gorgonians – THIG



Paramuricea macrospina

Precious red coral – REDC



Corallium rubrum

EN

Flexible white and salmon-pink fan-shaped gorgonians (*Eunicella* spp.) – EUNI



Eunicella cavolini

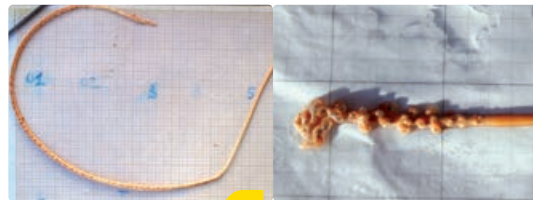
Eunicella verrucosa

Salmon-pink, brittle fan-shaped gorgonians – CALL



Callogorgia verticillata

White, stem-like sea pens – STEM

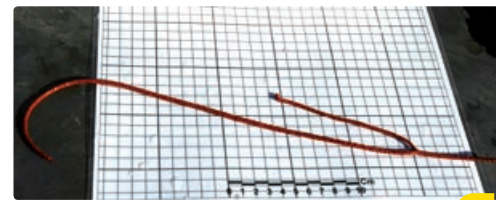


Funiculina quadrangularis

Kophobelemnion stelliferum

VU

Candelabrum-shaped, red gorgonians – ELLP



Ellisella paraplexauroides

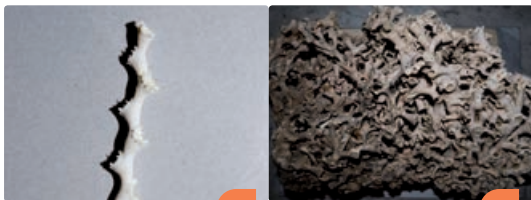
VU

Tall, white or yellow whip gorgonians (*Viminella flagellum*) – VIMF



Viminella flagellum

White corals – WHIT



Madrepora oculata

EN

Lophelia pertusa

EN

Colonial hard corals – CLAD



Cladocora caespitosa

EN

Arborescent black corals – BLAC



Antipathella subpinnata

Parantipathes larix

Leiopathes glaberrima

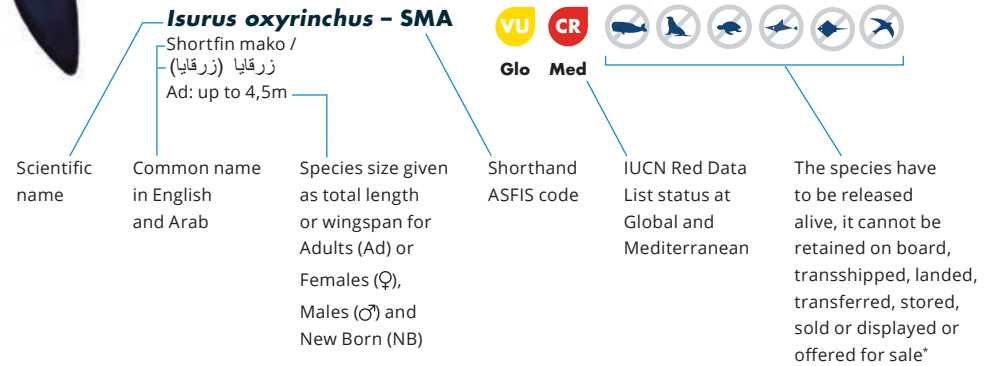
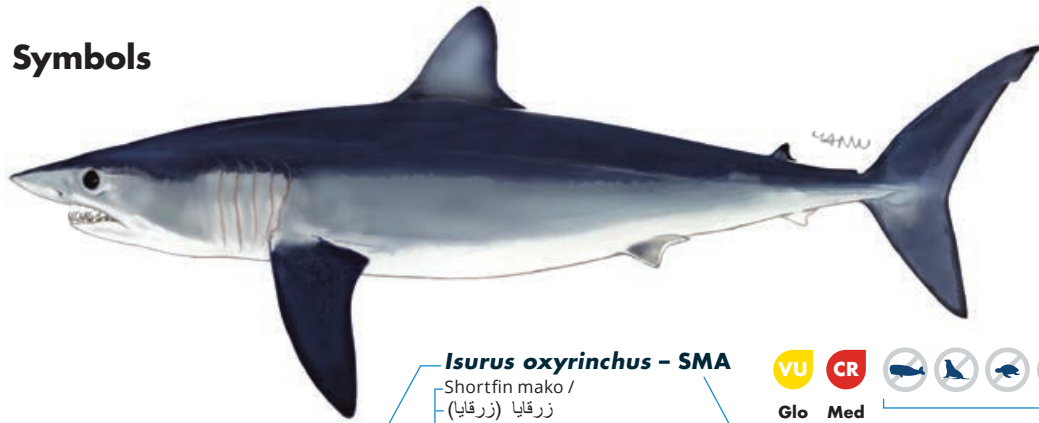
EN

Antipathes dichotoma

Abbreviations

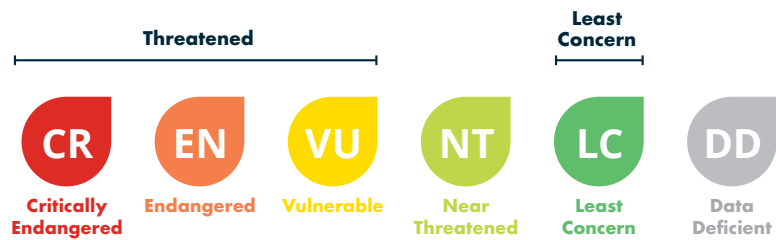
Ad: Adult
 ♂: Male
 ♀: Female
 NB: New Born
 W: Wingspan

Symbols



Key to IUCN Red List category symbols

For each species sheets, the IUCN categories relating to the conservation status both globally (Glo) and Mediterranean (Med) level are reported, according to the following scheme:



Geographical subarea (GSA) 3 refers to Southern Alboran Sea. If the incidentally caught species is not included in this guide, please refer to the **Identification guide of vulnerable species incidentally caught in Mediterranean fisheries**, which also provides detailed information on the conservation status, regulations and protection of each species (under ACCOBAMS, SPA/BD Protocol, CITES, CMS, GFCM, IUCN).
 Illustration source of sharks and rays: FAO Original scientific illustrations archive. Reproduced with permission.

* GFCM recommendations related to the management and conservation of vulnerable species in the GFCM area of application: seabirds (Rec. GFCM/35/2011/3); sea turtles (Rec. GFCM/35/2011/4); cetaceans (Rec. GFCM/36/2012/2; Res. GFCM/43/2019/2); sharks and rays (Rec. GFCM/36/2012/3; Rec. GFCM/42/2018/2) and corals (Res. GFCM/43/2019/6).
 National legislation: Annual bylaw relating to the organisation of hunting and bylaw of 28 September 1995 regulating the exercise of fishing by Ministry of Agriculture, Water Resources and Fisheries.



QR Code

POCKET IDENTIFICATION GUIDE OF MAIN VULNERABLE SPECIES INCIDENTALLY CAUGHT IN TUNISIAN FISHERIES

Simplified guide adapted for Tunisia (GSA 12,13 & 14) from the Identification guide of vulnerable species incidentally caught in Mediterranean fisheries



MARINE MAMMALS



Stenella coeruleoalba

Striped Dolphin /
Dauphin bleu et blanc /
الدلفين الأزرق والأبيض (المخطط)
Ad: 1.8-2.6 m
NB: 85-95 cm



Glo Med



Delphinus delphis

Common dolphin /
Dauphin commun / الدلفين الشائع
♂: 2.0-2.6 m / ♀: 2.4 m /
NB: 80-90 cm



Glo Med



Tursiops truncatus

Bottlenose dolphin /
Grand dauphin, dauphin souffleur /
الدلفين الكبير (ذو الأنف الزجاجي)
♂: 2.5 - 3.9 m / ♀: 2.2-3.2
NB: 1-1.2 m



Glo Med



Balaenoptera physalus

Fin whale / Rorqual commun / المهرقول الشائع
♂: 18-20 m / ♀: 20-22 m / NB: 6-6.5 m



Glo Med

SEABIRDS



winter

Summer

Larus michahellis

Yellow-legged gull / Goéland
leucophée / نورس أصفر الساق /
Wingspan: 1.2 - 1.4 m



Glo



Winter

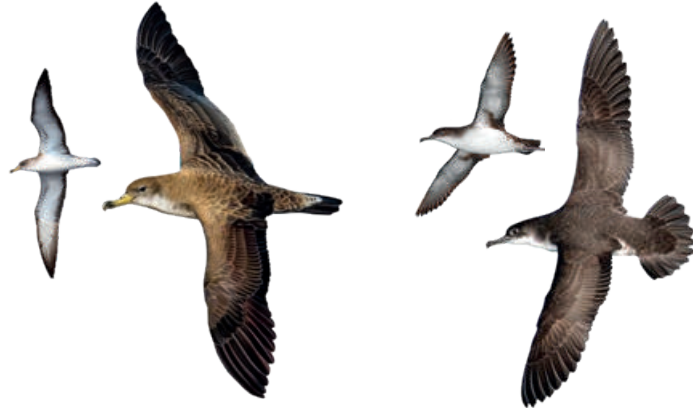
Summer

Larus audouinii

Audouin's gull / Goéland
d'Audouin / نورس أودوين /
W: 1.17 - 1.28 m



Glo



Calonectris diomedea

Scopoli's shearwater /
Puffin de Scopoli /
جلم ماء سكوبولي
W: 1.12 - 1.22 m



Glo

Puffinus yelkouan

Yelkouan shearwater /
Puffin yelkouan /
جلم ماء متوسطي
W: 70 - 84 cm



Glo



Phalacrocorax carbo

Great cormorant /
Grand Cormoran / غاق كبير
W: 77 - 94 cm



Glo

SEA TURTLES



Glo Med

Caretta caretta

Loggerhead / Tortue caouanne /
سلحفاة بحرية ضخمة الرأس
♂: 75-80 cm; ♀: 66-85 cm



Glo

Chelonia mydas

Green turtle / Tortue franche,
Tortue verte / السلحفاة الخضراء /
Ad (♂ and ♀): 80-120 cm



Glo

Dermochelys coriacea

Leatherback / Tortue luth /
سلحفاة المحيط جلدية الظهر
Average adult length 1.4-1.6 m

CHONDRICHTYANS

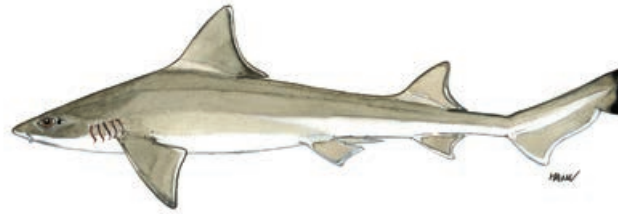


Mustelus asterias - SDS

Starry smooth-hound shark / Émissole tachetée / كلب نجمي (قطاط)
Ad: up to 1.4 m



Glo Med



Mustelus mustelus - SMD

Smooth-hound / Émissole lisse / كلب ناعم (قطاط)
Ad: up to 2 m



Glo Med



Mustelus punctulatus - MPT

Blackspotted smooth-hound / Émissole pointillée / كلب منقَط (قطاط)
Ad: up to 1.9 m



Glo Med



Carcharhinus brevipinna - CCB

Spinner shark / Requin tisserand / قرش لولبي (وشة / بومنقار)
Ad: up to 28 cm



Glo



Squalus blainville - QUB

Longnose spurdog / Aiguillat-coq / كلب أبو شوكة مأنف قطاط بوشوكة
Ad: 50 - 80 cm, occasionally until 1.1 m



Glo Med

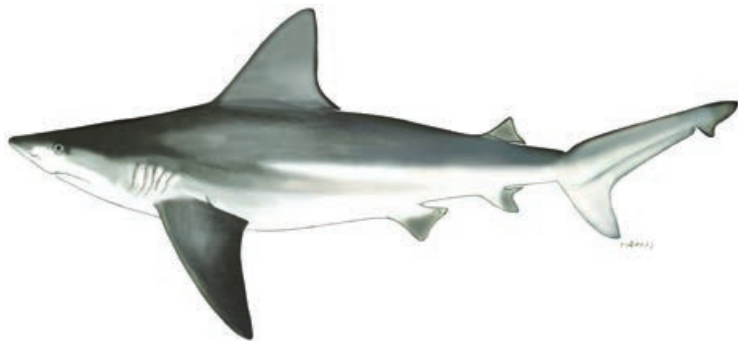


Squalus megalops - DOP

Shortnose spurdog / Aiguillat nez court / قطاط بوشوكة
Ad: less than 70 cm in total length (also 100 cm TL)



Glo Med



Carcharhinus plumbeus - CCP

Sandbar shark / Requin gris / قرش رمادي (كلب بحر)
Ad: up to 3 m



Glo Med

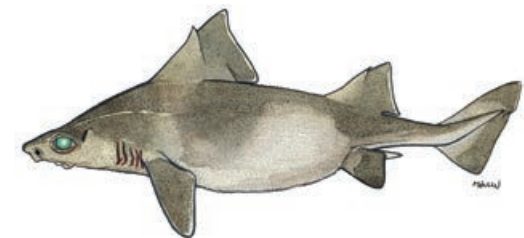


Isurus oxyrinchus - SMA

Shortfin mako / Requin-taupe bleue / زرقابا (زرقابا)
Ad: up to 4.5 m



Glo Med



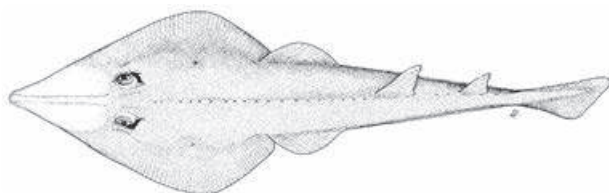
Oxynotus centrina - OXY

Angular rough shark / Centrine commune / حمار البحر (نعجة)
Ad: up to 1.5 m



Glo Med

CHONDRICHTYANS



Glaucostegus cemiculus – RBC

Blackchin guitarfish / Guitar de Mer fousseuse /
قِيثَارَة سَوْدَاء الذَّقْن (مِحْرَاث / قِرْس)
Ad: up to 2.42 m length



Glo Med



Hexanchus griseus – SBL

Bluntnose six-gill shark / Requin gris /
كَلَب أَبُو سِتَّة (الدُودَة)
Ad: up to 5 m



Glo Med

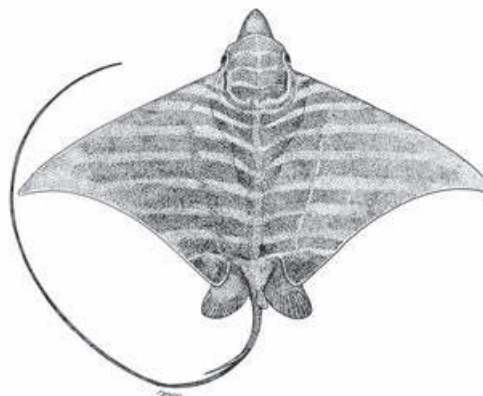


Squatina aculeata – SUA

Sawback angelshark /
Ange de mer épineux / (سِفْن / وَقَاص) /
Ad: up to 1.9 m in total length



Glo Med

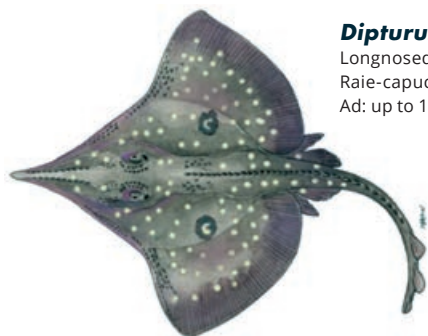


Aetomylaeus bovinus – MPO

Bullray / Aigle Vachette / رَايَة بَقْرَة (البَقْرَة)
Ad: Disc wide up to 2.2 m



Glo Med



Dipturus oxyrinchus – RJO

Longnosed skate /
Raie-capucin / قَرِشَلَا
Ad: up to 1.5 m in total length



Glo Med

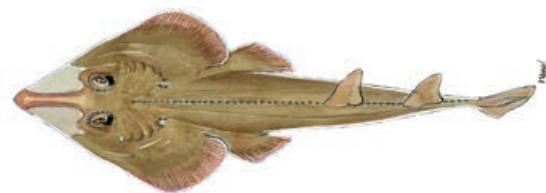


Squatina oculata – SUT

Smoothback angelshark /
Ange de mer ocellé / (سِفْن / وَقَاص)
Ad: up to 1.6 m in total length



Glo Med

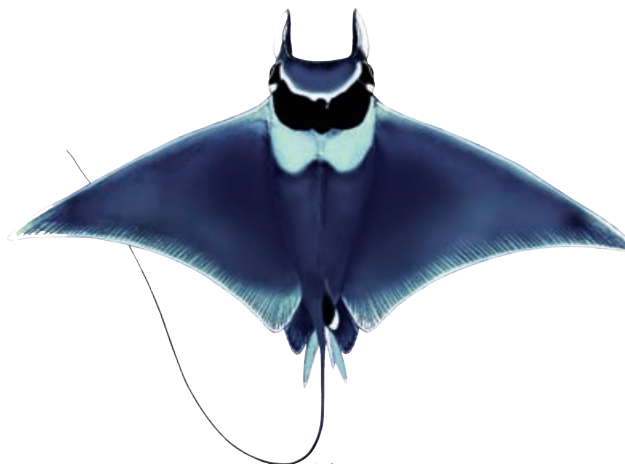


Rhinobatos rhinobatos – RBC

Common guitarfish / Guitar de Mer commune /
قِيثَارَة شَائِعَة (مِحْرَاث / قِرْس)
Ad: 1.5 m in total length



Glo Med

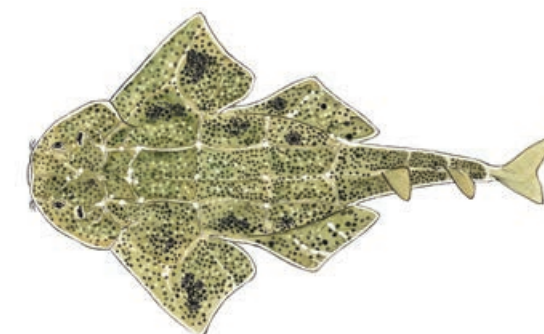


Mobula mobular – RMM

Devil fish / Diable de mer,
Raie à oreilles / عَيْنُوفِي قِرْنُو
Ad: Disc wide up to 5.2 m



Glo Med



Squatina squatina – AGN

Angelshark / Ange de mer commun /
(سِفْن / وَقَاص)
Ad: up to 2.5 m

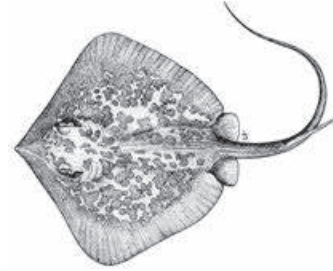


Glo Med

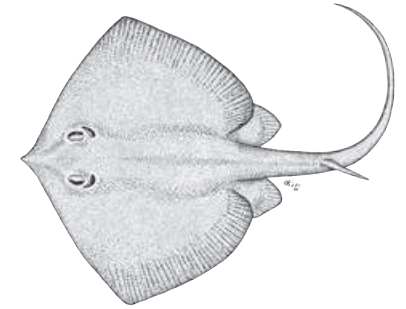
CHONDRICHTYANS



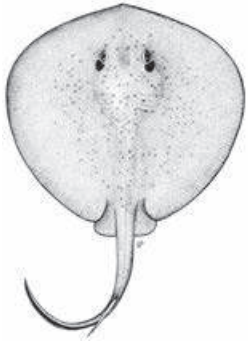
***Dasyatis pastinaca* – JDP** DD VU
Common stingray / Rina /
راية لاسعة شائعة (حمام)
Ad: Disc wide up to 68 cm
Glo Med



***Dasyatis marmorata* – RDQ** DD DD
Marble stingray / Pastenague marbrée /
راية رخامية لاسعة
Ad: Disc wide up to 60 cm
Glo Med



***Dasyatis tortonesei* – JDP** DD VU
Tortonese's stingray / Pastenague
de Tortonese / (حمام)
Ad: Disc wide up to 84 cm
Glo Med



***Taeniurops grabata* – RTB** DD DD
Round fantail stingray /
Pastenague africaina /
(ترش)
Ad: up to 80 cm in total length
Glo Med



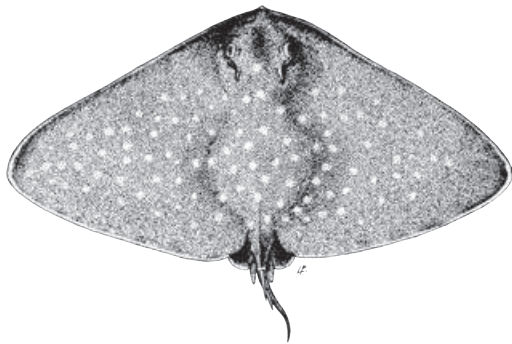
***Raja radula* – JAR** EN EN
Rough ray / Ange de mer commun /
راية خشنة (قرشلة)
Ad: up to 70 cm in total length
Glo Med



***Raja miraletus* – JAI** LC LC
Brown ray / Raie miroir /
راية إم عيون (قرشلة)
Ad: up to 70cm in total length
Glo Med



***Raja clavata* – RJC** NT NT
Thornback ray / Raie bouclée /
قرشلا او قرداش
Ad: up to 90-130cm in total length
Glo Med



***Gymnura altavela* – RGL** VU CR
Spiny butterfly ray / Raie-papillon
épineuse / راية الفراشة (حصيرة)
Ad: Disc wide up to 4 m, common 2 m
Glo Med



***Myliobatis aquila* – MYL** DD VU
Common eagle ray /
Aigle de mer / بقرة
Ad: Disc wide up to 1.5 m
Glo Med



***Torpedo torpedo* – TTV** DD LC
Common torpedo / Torpille ocellée /
راية حَلْفِيَّة (نعاس)
Ad: 60 cm in total length
Glo Med



***Torpedo marmorata* – TTR** DD LC
Marbled electric ray /
Torpille marbrée /
راية مَرْمَرِيَّة (نعاس)
Ad: up to 1 m in total length
Glo Med

SPONGES



Massive keratose sponges – KERA



Sarcotragus sp.



Sarcotragus sp.



Hippospongia communis



Ircinia variabilis

Globular sponges – GLOS



Suberites domuncula



Tethya aurantium



Therea spp.

Massive Mediterranean stony sponge – PETR

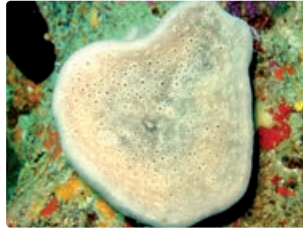


Petrosia ficiformis (burgundy morph)



Petrosia ficiformis (white morph)

Lamellate to cup-shaped sponges – LAMS



Spongia lamella



Calyx nicaeensis

Arborescent sponges – ARBS



Axinella sp.

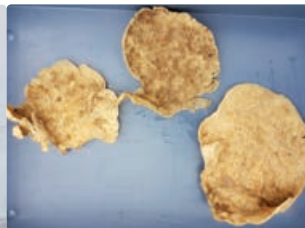


Axinella cannabina

Fan-shaped sponges – FANS



Phakellia ventilabrum



Phakellia robusta

Massive, (sub-) spherical hard sponges (*Geodia* spp.) – GEOD



Geodia cydonium

Massive-tubular gold sponges (*Aplysina* spp.) – APLY



Aplysina spp.

Lamellate rock sponges (*Leiodermatium* sp.) – ROCK



Leiodermatium pfeifferae

Other massive sponges (to be recorded as "Other massive") – OTHR



Agelas oroides

Birds' nest glass sponge – BIRD



Pheronema carpenteri

Felt vase glass sponge – FELT



Asconema setubalense

CORALS

Soft corals – SOFT



Alcyonium palmatum

Thick and tall red, yellow fan-shaped gorgonians – FANG



Acanthogorgia hirsuta

Paramuricea clavata

VU

Seapens – PENS



Pteroeides spinosum and *Pennatula* spp.

Bamboo corals – BAMB



Isidella elongata

CR

Bright yellow or salmon-pink hard corals (*Dendrophyllia* spp.) – DEND



Dead *dendrophyllids*

Dendrophyllia cornigera

EN

Dendrophyllia ramea

VU

Thin, delicate white, reddish, yellow fan-shaped gorgonians – THIG



Paramuricea macrospina

Precious red coral – REDC



Corallium rubrum

EN

Flexible white and salmon-pink fan-shaped gorgonians (*Eunicella* spp.) – EUNI



Eunicella cavolini

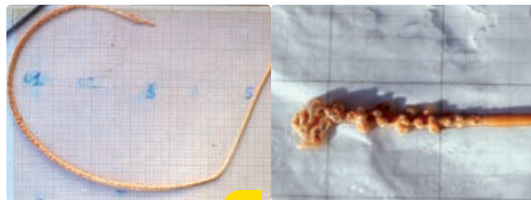
Eunicella verrucosa

Salmon-pink, brittle fan-shaped gorgonians – CALL



Callogorgia verticillata

White, stem-like sea pens – STEM

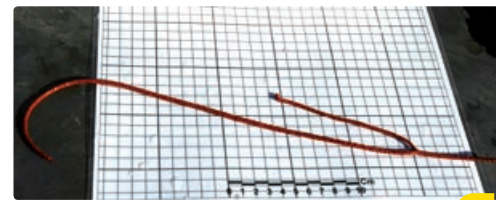


Funiculina quadrangularis

Kophobelemnion stelliferum

VU

Candelabrum-shaped, red gorgonians – ELLP



Ellisella paraplexauroides

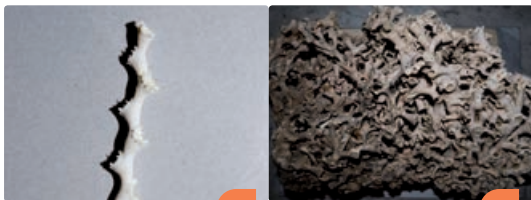
VU

Tall, white or yellow whip gorgonians (*Viminella flagellum*) – VIMF



Viminella flagellum

White corals – WHIT



Madrepora oculata

EN

Lophelia pertusa

EN

Colonial hard corals – CLAD



Cladocora caespitosa

EN

Arborescent black corals – BLAC



Antipathella subpinnata

Parantipathes larix

Leiopathes glaberrima

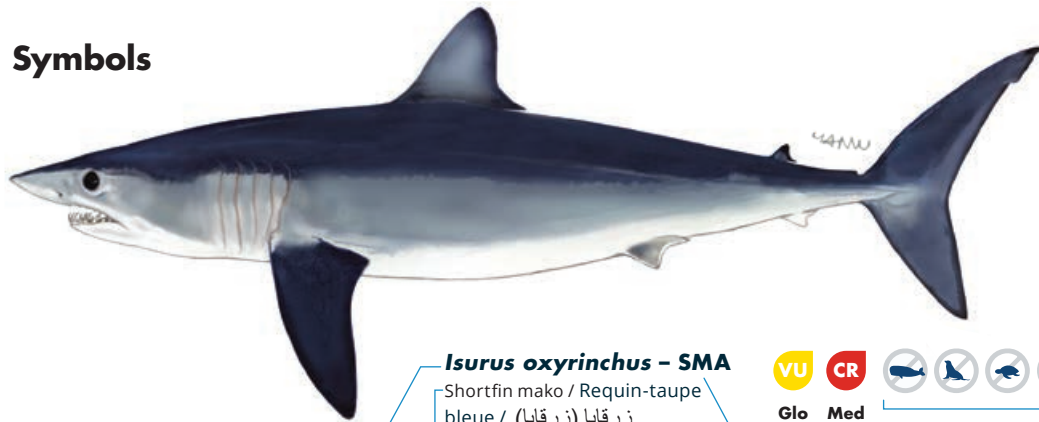
EN

Antipathes dichotoma

Abbreviations

Ad: Adult
 ♂: Male
 ♀: Female
 NB: New Born
 W: Wingspan

Symbols

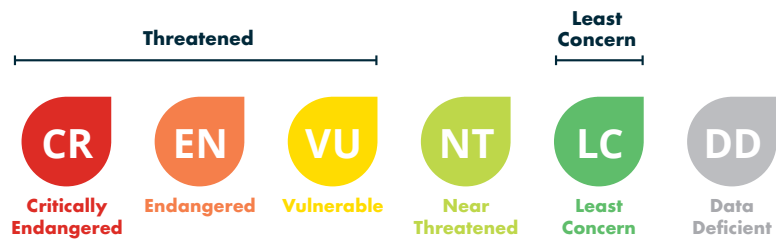


***Isurus oxyrinchus* – SMA**
 Shortfin mako / Requin-taupe
 bleue / زرقايا (زرقايا)
 Ad: up to 4,5m

Scientific name | Common name in English, French and Arab | Species size given as total length or wingspan for Adults (Ad) or Females (♀), Males (♂) and New Born (NB) | Shorthand ASFIS code (Glo Med) | IUCN Red Data List status at Global and Mediterranean | The species have to be released alive, it cannot be retained on board, transhipped, landed, transferred, stored, sold or displayed or offered for sale*

Key to IUCN Red List category symbols

For each species sheets, the IUCN categories relating to the conservation status both globally (Glo) and Mediterranean (Med) level are reported, according to the following scheme:



Geographical subarea (GSA) 12 (Northern Tunisia), 13 (Gulf of Hammamet), 14 (Gulf of Gabes) refer to the Central Mediterranean Sea-North African coasts. If the incidentally caught species is not included in this guide, please refer to the **Identification guide of vulnerable species incidentally caught in Mediterranean fisheries**, which also provides detailed information on the conservation status, regulations and protection of each species (under ACCOBAMS, SPA/BD Protocol, CITES, CMS, GFCM, IUCN).
 Illustration source of sharks and rays: FAO Original scientific illustrations archive. Reproduced with permission.

* GFCM recommendations related to the management and conservation of vulnerable species in the GFCM area of application: seabirds (Rec. GFCM/35/2011/3); sea turtles (Rec. GFCM/35/2011/4); cetaceans (Rec. GFCM/36/2012/2; Res. GFCM/43/2019/2); sharks and rays (Rec. GFCM/36/2012/3; Rec. GFCM/42/2018/2) and corals (Res. GFCM/43/2019/6).
 National legislation: Annual bylaw relating to the organisation of hunting and bylaw of 28 September 1995 regulating the exercise of fishing by Ministry of Agriculture, Water Resources and Fisheries.



QR Code

POCKET IDENTIFICATION GUIDE OF MAIN VULNERABLE SPECIES INCIDENTALLY CAUGHT IN TURKISH FISHERIES

Simplified guide adapted for Turkey (GSAs 22 and 24) from the Identification guide of vulnerable species incidentally caught in Mediterranean fisheries



MARINE MAMMALS



Stenella coeruleoalba

Striped dolphin /
Çizgili yunus
Ad: 1.8-2.6 m
NB: 85-95 cm



Glo Med



Grampus griseus

Risso's dolphin / Grampus
Ad: 3 - 4 m / NB: 1.2 - 1.5 m



Glo Med



Delphinus delphis

Common dolphin / Tirtak
♂: 2.0-2.6 m / ♀: 2.4 m /
NB: 80-90 cm



Glo Med



Tursiops truncatus

Common bottlenose dolphin /
Afalina
♂: 2.5 - 3.9 m
♀: 2.2-3.2
NB: 1-1.2 m



Glo Med



Physeter macrocephalus

Sperm whale / Kaşalot
♂: 16-18 m / ♀: 11-12 m / NB: 3.3-4.2 m



Glo Med



Ziphius cavirostris

Cuvier's beaked whale /
Gagalı balina
♂: up to 7.5 m
♀: up to 7 m
NB: 2-2.7 m



Glo Med



Phocoena phocoena

Harbour porpoise /
Mudur
♂: 1,8 m
♀: 2 m
NB: 50-70 cm



Glo



Balaenoptera acutorostrata

Common minke whale /
Mink Balinası
♂: 7m / ♀: 7,30 m / NB: 2.4-2.8 m



Glo



Balaenoptera physalus

Fin whale / Uzun Balina
♂: 18-20 m / ♀: 20-22 m / NB: 6-6.5 m



Glo Med



Steno bredanensis

Rough-toothed dolphin /
Kabadışli yunus
Ad: 2.2 - 2.5 m / NB: 1m



Glo Med



Glo

Pseudorca crassidens

False killer whale / Yalancı katil balina
Ad: 3,7-5,5 m / NB: 1,8-2,1m



Globicephala melas

Long-finned pilot whale /
Siyah yunus
♂: 5.5-6.2 m / ♀: 4.5-5.5 m
NB: 1.7-1.8 m



Glo Med



Mesoplodon densirostris*

Blainville's beaked whale / Dişli gagalı balinat
♂: 4,5m / ♀: 5,2m / NB: 2,1m



Glo

SEABIRDS



LC *Larus michahellis*
Yellow-legged gull / Gümüş Martı
Glo Wingspan: 120 – 140 cm



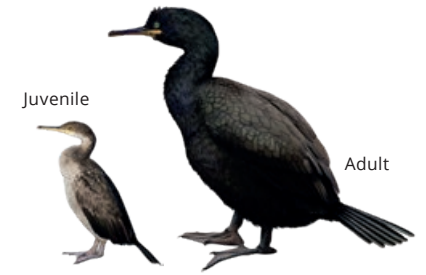
LC *Larus melanocephalus*
Mediterranean gull / Akdeniz martısı
Glo W: 94 – 102 cm



LC *Larus audouinii*
Audouin's gull / Ada martısı
Glo W: 117 – 128 cm



LC *Phalacrocorax carbo*
Great Cormorant / Karabatak
Glo W: 77 – 94 cm



LC *Gulosus aristotelis desmarestii*
European shag / Tepeli karabatak
Glo W: 115 – 125 cm



LC *Larus ridibundus*
Black-headed gull / karabaş martı
Glo W: 86 – 99 cm

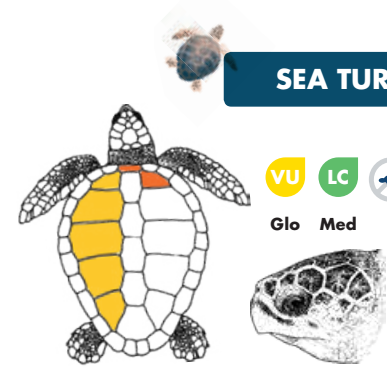


LC *Thalasseus sandvicensis*
Sandwich tern / Karagagalı sumru
Glo W: 85 – 97 cm



LC *Sterna hirundo*
Common Tern / Sumru
Glo W: 70 – 80 cm

SEA TURTLES



VU **LC**
Glo **Med**
Caretta caretta
Loggerhead turtle / Sini Kaplumbağası
♂: 75-80 cm; ♀: 66-85 cm



EN
Glo
Chelonia mydas
Green turtle / Yeşil kaplumbağa
Ad (♂ and ♀): 80-120 cm



VU *Puffinus yelkouan*
Yelkouan shearwater / Yelkovan
Glo W: 70 – 84 cm



LC *Calonectris diomedea*
Scopoli's shearwater / Boz yelkovan
Glo W: 112 – 122 cm



LC *Hydrobates pelagicus*
European storm petrel / Firtina kırlangıcı
Glo W: 37 – 41 cm

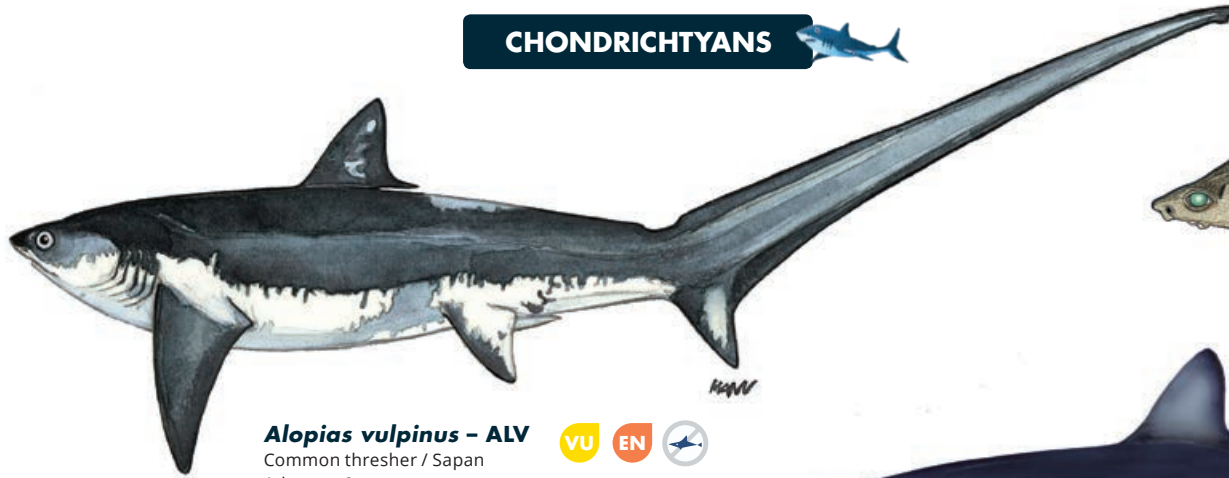


VU
Glo
Dermochelys coriacea
Leatherback sea turtle /
Deri sırtlı deniz kaplumbağası
Average adult length 1.4-1.6 m



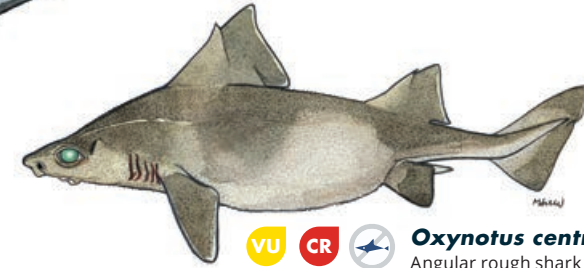
VU **CR**
Glo **Med**
Trionyx triunguis
African softshell turtle /
Nil kaplumbağası
Ad: 50-95 cm

CHONDRICHTYANS



Alopias vulpinus - ALV
Common thresher / Sapan
Ad: up to 6 m

VU EN
Glo Med



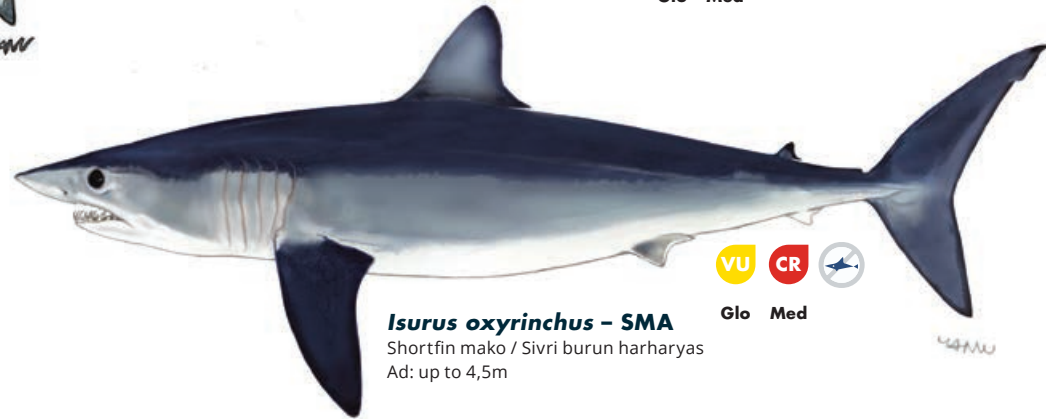
VU CR
Glo Med

Oxynotus centrina - OXY
Angular rough shark / Domuz Balığı
Ad: up to 1,5 m



Centrophorus cf uyato - GUP
Gulper shark / Yutucu köpekbalığı
Ad: up to 1,2 m

DD CR
Glo Med



Isurus oxyrinchus - SMA
Shortfin mako / Sivri burun harharyas
Ad: up to 4,5m

VU CR
Glo Med



Galeorhinus galeus - GAG
Tope shark / Camgöz balığı
Ad: up to 1,6m

VU VU
Glo Med



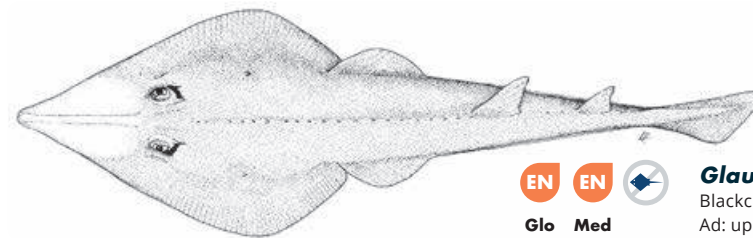
Rhinobatos rhinobatos - RBC
Common guitarfish / Uzun Kemane
Ad: up to 1,5m

EN EN
Glo Med



Hepttranchias perlo - HXT
Sharpnose sevengill shark /
Yedi yarıklı boz camgöz
Ad: up to 1,4m

NT DD
Glo Med



EN EN
Glo Med

Glaucostegus cemiculus - RBC
Blackchin guitarfish / Kemane
Ad: up to 2,42m

CHONDRICHTYANS



Leucoraja fullonica - RJF

Shagreen skate /
Telatin vatoz
Ad: up to 1,2m



Glo Med



Leucoraja naevus - RJN

Cuckoo skate / Benli vatoz
Ad: up to 0,81m



Glo Med



Glo Med

Raja radula - JAR

Rough skate / Pürüzlü vatoz
Ad: up to 0,7m

Raja polystigma - RJM

Speckled skate / Benekli Vatoz
Ad: up to 0,7m



Glo Med

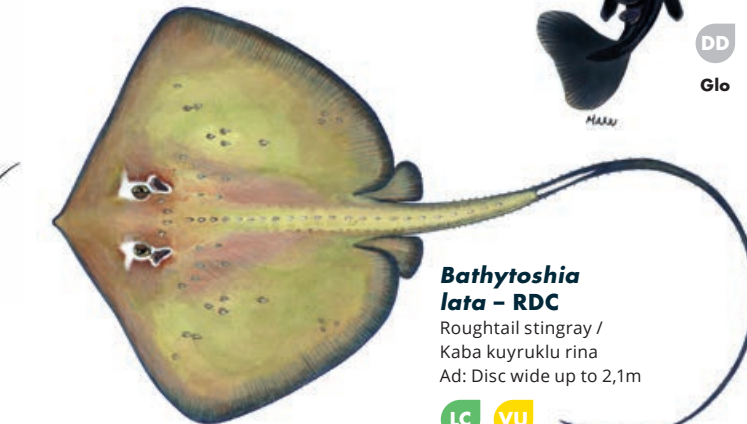


Dasyatis pastinaca - JDP

Common stingray / Rina
Ad: Disc wide up to 0,68m



Glo Med

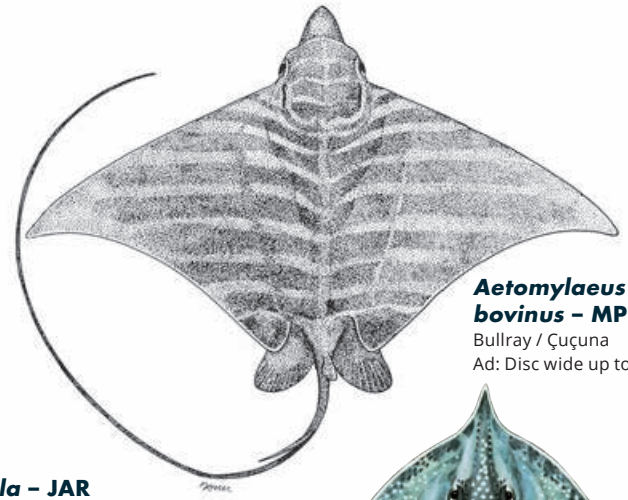


Bathytoshia lata - RDC

Roughtail stingray /
Kaba kuyruklu rina
Ad: Disc wide up to 2,1m



Glo Med



Aetomylaeus bovinus - MPO

Bullray / Çuçuna
Ad: Disc wide up to 2,2m



Glo Med

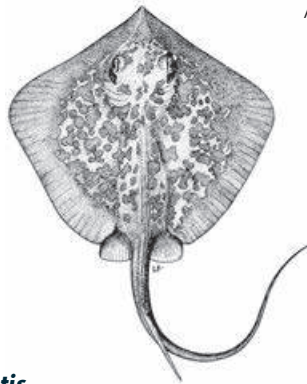


Rostroraja alba - RJA

White skate /
Beyaz Vatoz
Ad: up to 2,4m



Glo Med



Dasyatis marmorata - RDQ

Marbled stingray /
Benekli rina
Ad: Disc wide up to 60cm



Glo Med



Raja undulata - RJU

Undulate skate /
Boyalı Vatoz
Ad: up to 1,14m



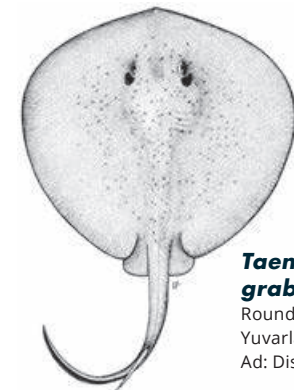
Glo Med

Tetronarce nobiliana - TTO

Electric ray / Çarpan
Ad: up to 1,8m



Glo Med



Taeniurus grabatus - RTB

Round stingray /
Yuvarlak Rina
Ad: Disc wide up to 0,8m



Glo Med

SPONGES



Massive keratose sponges – KERA



Sarcotragus sp.



Sarcotragus sp.



Hippospongia communis



Ircinia variabilis

Globular sponges – GLOS



Suberites domuncula



Tethya aurantium



Thenea spp.

Massive Mediterranean stony sponge – PETR

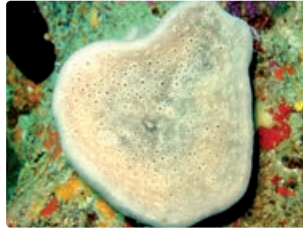


Petrosia ficiformis (burgundy morph)

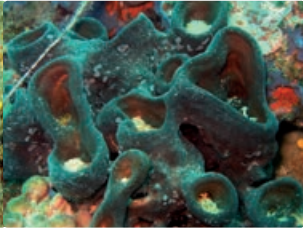


Petrosia ficiformis (white morph)

Lamellate to cup-shaped sponges – LAMS



Spongia lamella



Calyx nicaeensis

Arborescent sponges – ARBS



Axinella sp.

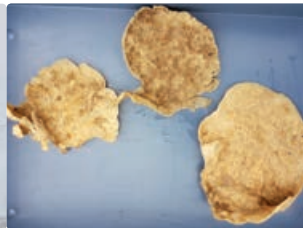


Axinella cannabina

Fan-shaped sponges – FANS



Phakellia ventilabrum



Phakellia robusta

Massive, (sub-) spherical hard sponges (*Geodia* spp.) – GEOD



Geodia cydonium

Massive-tubular gold sponges (*Aplysina* spp.) – APLY



Aplysina spp.

Lamellate rock sponges (*Leiodermatium* sp.) – ROCK



Leiodermatium pfeifferae

Other massive sponges (to be recorded as "Other massive") – OTHR



Agelas oroides

Birds' nest glass sponge – BIRD



Pheronema carpenteri

Felt vase glass sponge – FELT



Asconema setubalense

CORALS

Soft corals – SOFT



Alcyonium palmatum

Thick and tall red, yellow fan-shaped gorgonians – FANG



Acanthogorgia hirsuta

Paramuricea clavata

VU

Seapens – PENS



Pteroeides spinosum and *Pennatula* spp.

Bamboo corals – BAMB



Isidella elongata

CR

Bright yellow or salmon-pink hard corals (*Dendrophyllia* spp.) – DEND



Dead *dendrophyllids*

Dendrophyllia cornigera

EN

Dendrophyllia ramea

VU

Thin, delicate white, reddish, yellow fan-shaped gorgonians – THIG



Paramuricea macrospina

Precious red coral – REDC



Corallium rubrum

EN

Flexible white and salmon-pink fan-shaped gorgonians (*Eunicella* spp.) – EUNI



Eunicella cavolini

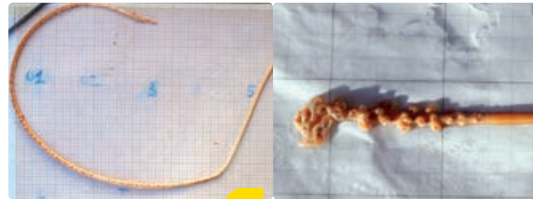
Eunicella verrucosa

Salmon-pink, brittle fan-shaped gorgonians – CALL



Callogorgia verticillata

White, stem-like sea pens – STEM

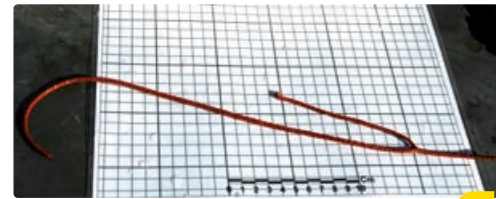


Funiculina quadrangularis

Kophobelemnion stelliferum

VU

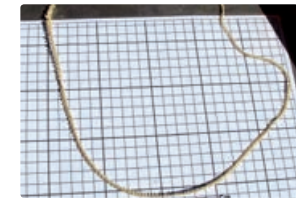
Candelabrum-shaped, red gorgonians – ELLP



Ellisella paraplexauroides

VU

Tall, white or yellow whip gorgonians (*Viminella flagellum*) – VIMF



Viminella flagellum

White corals – WHIT



Madrepora oculata

EN

Lophelia pertusa

EN

Colonial hard corals – CLAD



Cladocora caespitosa

EN

Arborescent black corals – BLAC



Antipathella subpinnata

Parantipathes larix

Leiopathes glaberrima

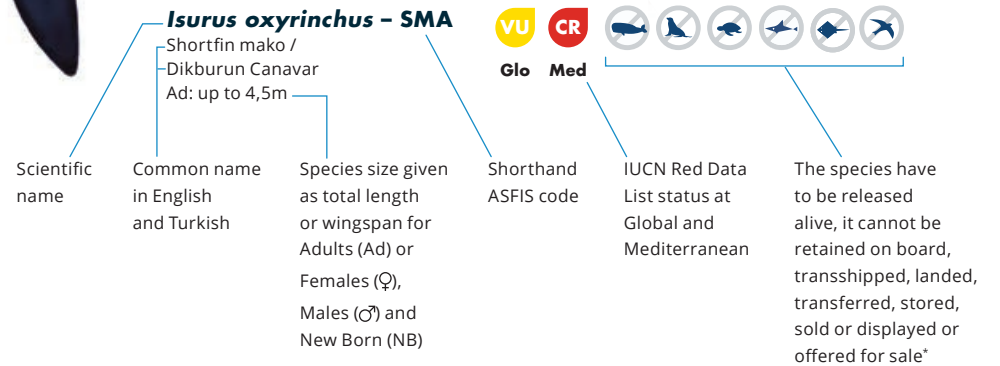
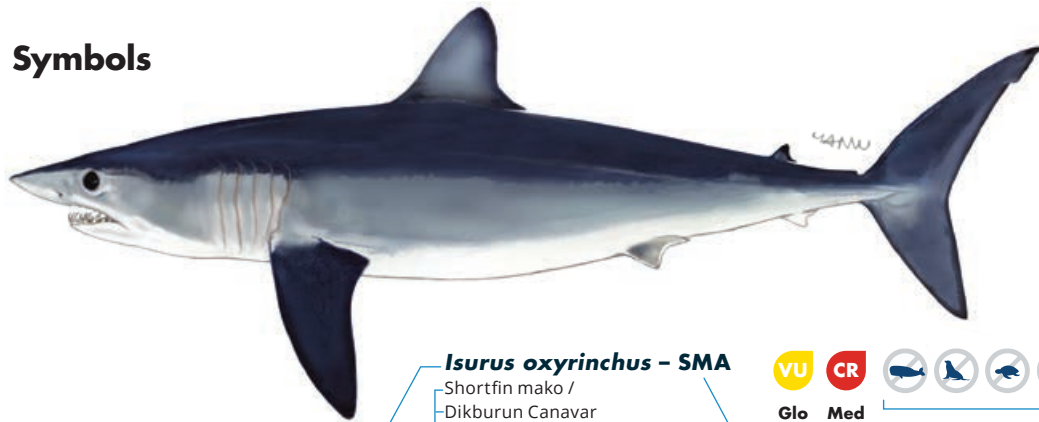
EN

Antipathes dichotoma

Abbreviations

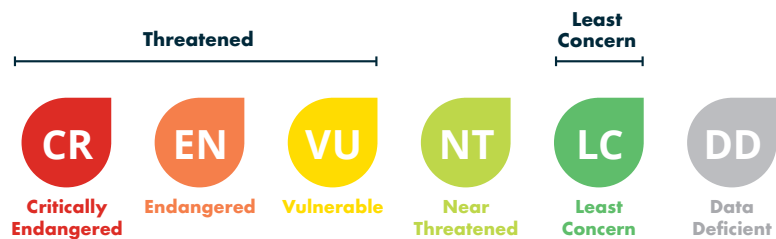
Ad: Adult
 ♂: Male
 ♀: Female
 NB: New Born
 W: Wingspan

Symbols



Key to IUCN Red List category symbols

For each species sheets, the IUCN categories relating to the conservation status both globally (Glo) and Mediterranean (Med) level are reported, according to the following scheme:



Geographical subarea (GSA) 22 refers to the Aegean Sea and GSA 24 to the Northern Levant Sea. If the incidentally caught species is not included in this guide, please refer to the **Identification guide of vulnerable species incidentally caught in Mediterranean fisheries**, which also provides detailed information on the conservation status, regulations and protection of each species (under ACCOBAMS, SPA/BD Protocol, CITES, CMS, GFCM, IUCN).
 Illustration source of sharks and rays: FAO Original scientific illustrations archive. Reproduced with permission.

* GFCM recommendations related to the management and conservation of vulnerable species in the GFCM area of application: seabirds (Rec. GFCM/35/2011/3); sea turtles (Rec. GFCM/35/2011/4); cetaceans (Rec. GFCM/36/2012/2; Res. GFCM/43/2019/2); sharks and rays (Rec. GFCM/36/2012/3; Rec. GFCM/42/2018/2) and corals (Res. GFCM/43/2019/6).
 Central Hunting Commission of Turkey 2019-2020 Resolutions



QR Code