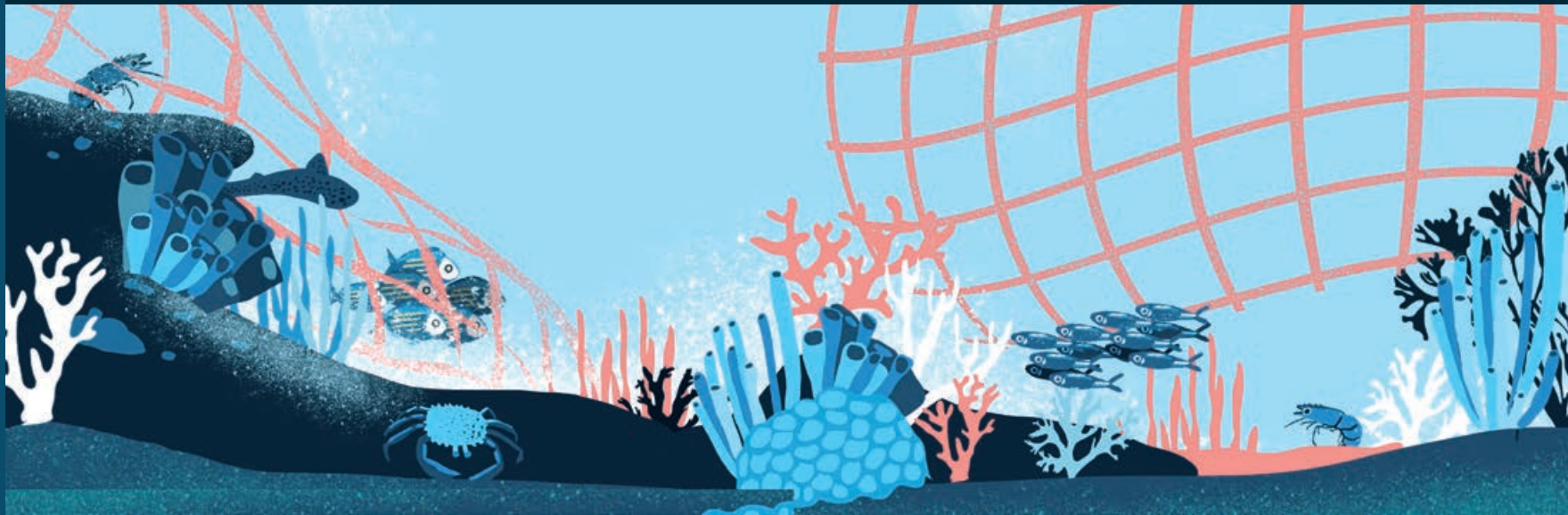


# POCKET IDENTIFICATION GUIDE OF MAIN VULNERABLE SPECIES INCIDENTALLY CAUGHT IN CROATIAN FISHERIES

Simplified guide adapted for Croatia (GSA 17) from the Identification guide of vulnerable species incidentally caught in Mediterranean fisheries



## MARINE MAMMALS



### *Stenella coeruleoalba*

Striped dolphin /  
prugasti dupin  
Ad: 1.8 – 2.6 m  
NB: 85 – 95 cm



Glo Med



### *Tursiops truncatus*

Common bottlenose dolphin /  
dobri dupin  
♂: 2.5 – 3.9 m  
♀: 2.2 – 3.2 m  
NB: 1 – 1.2 m



Glo Med



## SEABIRDS



Winter

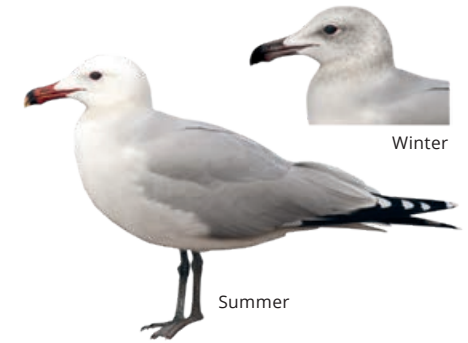
Summer



### *Larus michahellis*

Yellow-legged gull / galeb klaukavac  
Wingspan: 120 – 140 cm

Glo



Winter

Summer



### *Larus audouinii*

Audouin's gull / sredozemni galeb  
W: 117 – 128 cm

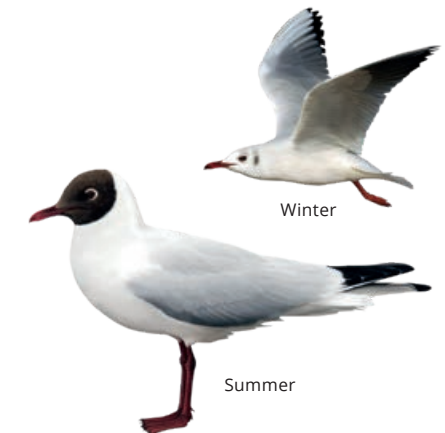
Glo



### *Calonectris diomedea*

Scopoli's shearwater / kaukal  
W: 112 – 122 cm

Glo



Winter

Summer



### *Larus ridibundus*

Black-headed gull / riječni galeb  
W: 86 – 99 cm

Glo



## SEABIRDS



Juvenile

Adult

LC

### *Gulosus aristotelis desmarestii*

European shag / morski vranac (sredozemna podvrsta)

Glo W: 115 – 125 cm



Winter

Summer

LC

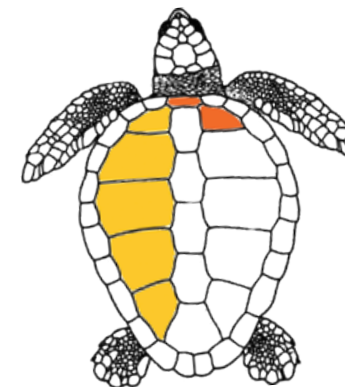
### *Thalasseus sandvicensis*

Sandwich tern / dugokljuna čigra

Glo W: 85 – 97 cm



## SEA TURTLES



VU LC

Glo Med



### *Caretta caretta*

Loggerhead turtle / glavata želva

♂: 75 – 80 cm; ♀: 66 – 85 cm



LC

### *Phalacrocorax carbo*

Great Cormorant / veliki vranac

Glo W: 77 – 94 cm



Summer

Winter

LC

### *Sterna hirundo*

Common tern / crvenokljuna čigra

Glo W: 70 – 80 cm

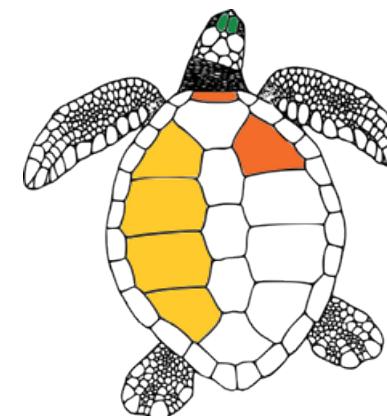


VU

### *Puffinus yelkouan*

Yellow-nosed shearwater / gregula

Glo W: 70 – 84 cm



EN

Glo



### *Chelonia mydas*

Green turtle / zelena želva

Ad (♂ and ♀): 80 – 120 cm

## CHONDRICHTYANS



***Alopias vulpinus* – ALV**

Common thresher / pas lisica  
Ad: up to 6 m



Glo Med

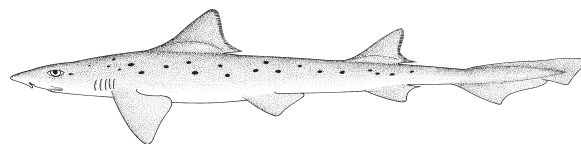


***Isurus oxyrinchus* – SMA**

Shortfin mako / dugonosa psina  
Ad: up to 4.5m



Glo Med



***Mustelus punctulatus* – MPT**

Blackspotted smooth-hound /  
pas mekaš pjegavi  
Ad: up to 1.9 m



Glo Med



***Hexanchus griseus* – SBL**

Bluntnose six-gill shark / volonja  
Ad: up to 5 m



Glo Med



***Galeorhinus galeus* – GAG**

Tope shark / butor  
Ad: up to 1.6m



Glo Med

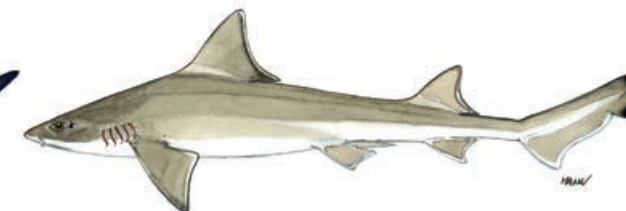


***Prionace glauca* – BSH**

Blue shark / modrulj  
Ad: up to 4 m



Glo Med



***Mustelus mustelus* – SMD**

Smooth-hound / pas mekaš  
Ad: up to 2 m



Glo Med



***Squalus acanthias* – DGS**

Picked dogfish / kostelj piknjavac  
Ad: up to 2 m



Glo Med



***Scyliorhinus canicula* – SYC**

Small-spotted catshark / mačka bljedica  
Ad: up to 1 m (60 cm in Mediterranean)



Glo Med



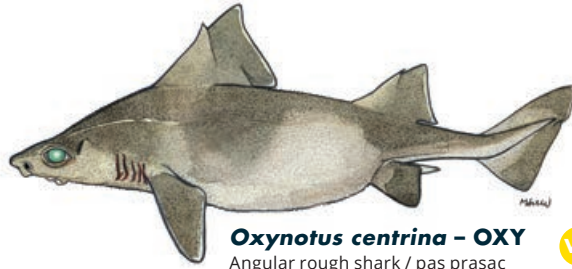
***Cetorhinus maximus* – BSK**

Basking shark / golema psina  
Ad: up to 10 m



Glo Med

## CHONDRICHTYANS



**Oxynotus centrina – OXY**  
Angular rough shark / pas prasac  
Ad: up to 1.5 m

VU CR

Glo Med



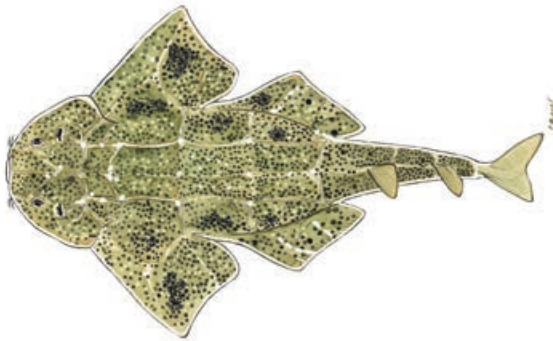
**Raja asterias – JRS**  
Mediterranean starry ray /  
raža zvjezdopjega  
Ad: up to 80 cm in total length

NT NT  
Glo Med



**Raja miraletus – JAI**  
Brown ray / rača modropjega  
Ad: up to 70 cm in total length

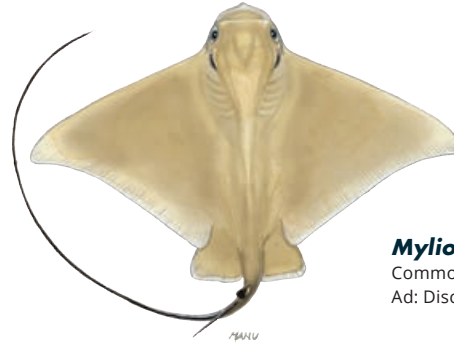
LC LC  
Glo Med



**Squatina squatina – AGN**  
Angelshark / sklat sivac  
Ad: up to 2.5 m total length

CR CR

Glo Med



**Myliobatis aquila – MYL**  
Common eagle ray / golub  
Ad: Disc wide up to 1.5 m

DD VU  
Glo Med



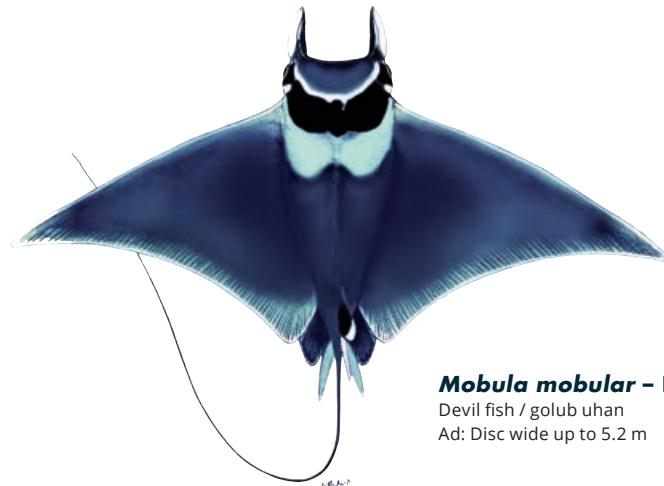
**Dasyatis pastinaca – JDP**  
Common stingray / žutuga  
Ad: Disc wide up to 0.68m

DD VU  
Glo Med



**Raja clavata – RJC**  
Thornback ray / rača kamenica  
Ad: up to 90-130 cm in total length

NT NT  
Glo Med



**Mobula mobular – RMM**  
Devil fish / golub uhan  
Ad: Disc wide up to 5.2 m

EN EN

Glo Med



**Torpedo marmorata – TTR**  
Marbled electric ray / drhtulja  
Ad: up to 1 m in total length

DD LC  
Glo Med

# SPONGES



## Massive keratose sponges – KERA



*Sarcotragus* sp.



*Sarcotragus* sp.



*Hippospongia communis*



*Ircinia variabilis*

## Globular sponges – GLOS



*Suberites domuncula*



*Tethya aurantium*



*Therea* spp.

## Massive Mediterranean stony sponge – PETR



*Petrosia ficiformis* (burgundy morph)



*Petrosia ficiformis* (white morph)

## Lamellate to cup-shaped sponges – LAMS



*Spongia lamella*



*Calyx nicaeensis*

## Arborescent sponges – ARBS



*Axinella* sp.

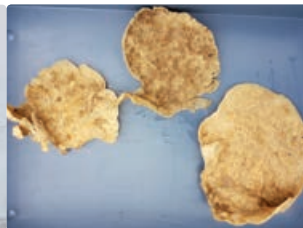


*Axinella cannabina*

## Fan-shaped sponges – FANS



*Phakellia ventilabrum*



*Phakellia robusta*

## Massive, (sub-) spherical hard sponges (*Geodia* spp.) – GEOD



*Geodia cydonium*

## Lamellate rock sponges (*Leiodermatium* sp.) – ROCK



*Leiodermatium pfeifferae*

## Massive-tubular gold sponges (*Aplysina* spp.) – APLY



*Aplysina* spp.

## Other massive sponges (to be recorded as "Other massive") – OTHR



*Agelas oroides*

## Birds' nest glass sponge – BIRD



*Pheronema carpenteri*

## Felt vase glass sponge – FELT



*Asconema setubalense*

**CORALS**

**Soft corals – SOFT**



*Alcyonium palmatum*

**Thick and tall red, yellow fan-shaped gorgonians – FANG**



*Acanthogorgia hirsuta*

*Paramuricea clavata*

VU

**Seapens – PENS**



*Pteroeides spinosum* and *Pennatula* spp.

**Bamboo corals – BAMB**



*Isidella elongata*

CR

**Bright yellow or salmon-pink hard corals (*Dendrophyllia* spp.) – DEND**



Dead *dendrophyllids*

*Dendrophyllia cornigera*

EN

*Dendrophyllia ramea*

VU

**Thin, delicate white, reddish, yellow fan-shaped gorgonians – THIG**



*Paramuricea macrospina*

**Precious red coral – REDC**



*Corallium rubrum*

EN

**Flexible white and salmon-pink fan-shaped gorgonians (*Eunicella* spp.) – EUNI**



*Eunicella cavolini*

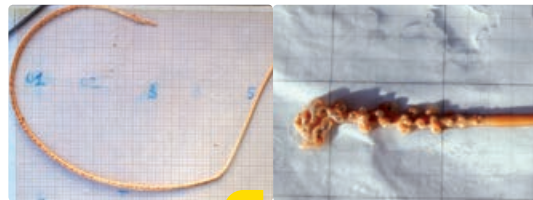
*Eunicella verrucosa*

**Salmon-pink, brittle fan-shaped gorgonians – CALL**



*Callogorgia verticillata*

**White, stem-like sea pens – STEM**



*Funiculina quadrangularis*

VU

*Kophobelemnion stelliferum*

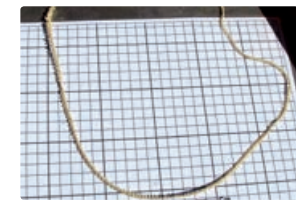
**Candelabrum-shaped, red gorgonians – ELLP**



*Ellisella paraplexauroides*

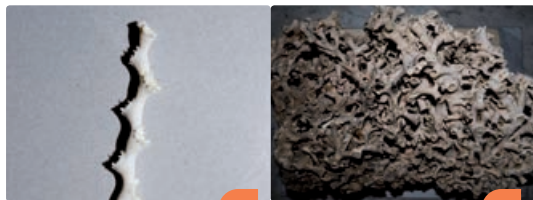
VU

**Tall, white or yellow whip gorgonians (*Viminella flagellum*) – VIMF**



*Viminella flagellum*

**White corals – WHIT**



*Madrepora oculata*

EN

*Lophelia pertusa*

EN

**Colonial hard corals – CLAD**



*Cladocora caespitosa*

EN

**Arborescent black corals – BLAC**



*Antipathella subpinnata*

*Parantipathes larix*

*Leiopathes glaberrima*

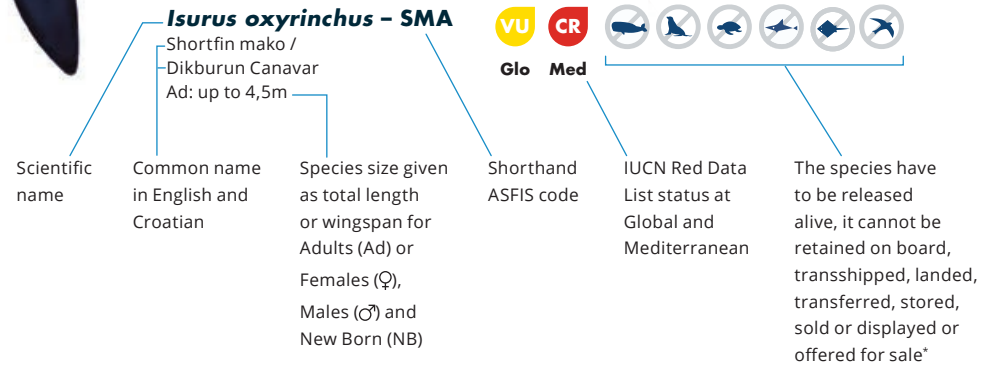
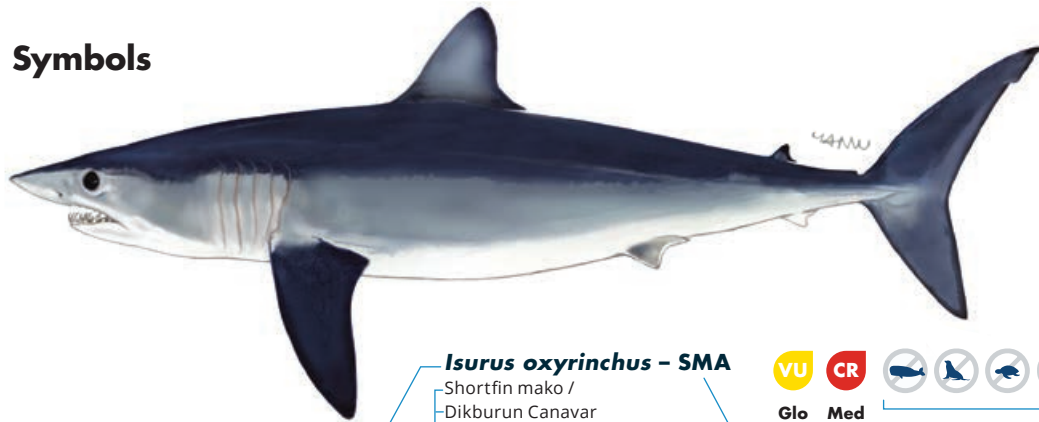
EN

*Antipathes dichotoma*

## Abbreviations

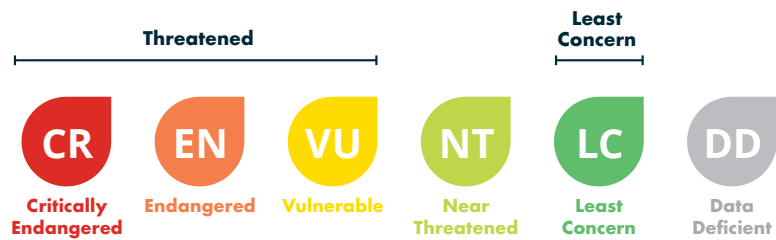
Ad: Adult  
 ♂: Male  
 ♀: Female  
 NB: New Born  
 W: Wingspan

## Symbols



## Key to IUCN Red List category symbols

For each species sheets, the IUCN categories relating to the conservation status both globally (Glo) and Mediterranean (Med) level are reported, according to the following scheme:



Geographical subarea (GSA) 17 refers to the Northern Adriatic Sea. If the incidentally caught species is not included in this guide, please refer to the **Identification guide of vulnerable species incidentally caught in Mediterranean fisheries**, which also provides detailed information on the conservation status, regulations and protection of each species (under ACCOBAMS, SPA/BD Protocol, CITES, CMS, GFCM, IUCN). Illustration source of sharks and rays: FAO Original scientific illustrations archive. Reproduced with permission.

\* GFCM recommendations related to the management and conservation of vulnerable species in the GFCM area of application: seabirds (Rec. GFCM/35/2011/3); sea turtles (Rec. GFCM/35/2011/4); cetaceans (Rec. GFCM/36/2012/2; Res. GFCM/43/2019/2); sharks and rays (Rec. GFCM/36/2012/3; Rec. GFCM/42/2018/2) and corals (Res. GFCM/43/2019/6); Ordinance on strictly protected species (Official Gazette 144/2013)



QR Code