

# POCKET IDENTIFICATION GUIDE OF MAIN VULNERABLE SPECIES INCIDENTALLY CAUGHT IN TUNISIAN FISHERIES

Simplified guide adapted for Tunisia (GSA 12,13 & 14) from the Identification guide of vulnerable species incidentally caught in Mediterranean fisheries



## MARINE MAMMALS



### *Stenella coeruleoalba*

Striped Dolphin /  
Dauphin bleu et blanc /  
الدلفين الأزرق والأبيض (المخطط)  
Ad: 1.8-2.6 m  
NB: 85-95 cm



Glo Med



### *Delphinus delphis*

Common dolphin /  
Dauphin commun /  
الدلفين الشائع  
♂: 2.0-2.6 m / ♀: 2.4 m /  
NB: 80-90 cm



Glo Med



### *Tursiops truncatus*

Bottlenose dolphin /  
Grand dauphin, dauphin souffleur /  
الدلفين الكبير (ذو الأنف الزجاجي)  
♂: 2.5 - 3.9 m / ♀: 2.2-3.2  
NB: 1-1.2 m



Glo Med



### *Balaenoptera physalus*

Fin whale / Rorqual commun /  
المهرقول الشائع  
♂: 18-20 m / ♀: 20-22 m / NB: 6-6.5 m



Glo Med

## SEABIRDS



winter

Summer

### *Larus michahellis*

Yellow-legged gull / Goéland  
leucophée / نورس أصفر الساق /  
Wingspan: 1.2 - 1.4 m



Glo



Winter

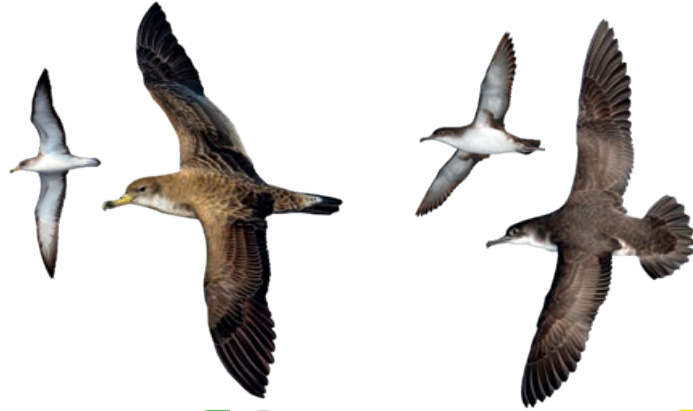
Summer

### *Larus audouinii*

Audouin's gull / Goéland  
d'Audouin / نورس أودوين /  
W: 1.17 - 1.28 m



Glo



### *Calonectris diomedea*

Scopoli's shearwater /  
Puffin de Scopoli /  
جلم ماء سكوبولي  
W: 1.12 - 1.22 m



Glo

### *Puffinus yelkouan*

Yelkouan shearwater /  
Puffin yelkouan /  
جلم ماء متوسطي  
W: 70 - 84 cm



Glo



### *Phalacrocorax carbo*

Great cormorant /  
Grand Cormoran /  
غاق كبير  
W: 77 - 94 cm



Glo

## SEA TURTLES



Glo Med

### *Caretta caretta*

Loggerhead / Tortue caouanne /  
سلحفاة بحرية ضخمة الرأس  
♂: 75-80 cm; ♀: 66-85 cm



Glo

### *Chelonia mydas*

Green turtle / Tortue franche,  
Tortue verte /  
السلحفاة الخضراء /  
Ad (♂ and ♀): 80-120 cm



Glo

### *Dermochelys coriacea*

Leatherback / Tortue luth /  
سلحفاة المحيط جلدية الظهر  
Average adult length 1.4-1.6 m

## CHONDRICHTYANS

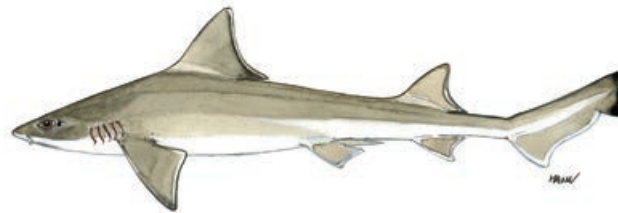


### **Mustelus asterias – SDS**

Starry smooth-hound shark / Émissole tachetée / كلب نجمي (قطاط)  
Ad: up to 1.4 m



Glo Med

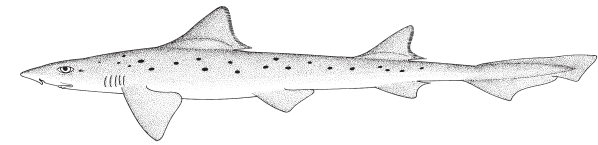


### **Mustelus mustelus – SMD**

Smooth-hound / Émissole lisse / كلب ناعم (قطاط)  
Ad: up to 2 m



Glo Med



### **Mustelus punctulatus – MPT**

Blackspotted smooth-hound / Émissole pointillée / كلب مُنقَط (قطاط)  
Ad: up to 1.9 m



Glo Med



### **Carcharhinus brevipinna – CCB**

Spinner shark / Requin tisserand / قرش لولبي (وشة / بومنقار)  
Ad: up to 28 cm



Glo



### **Squalus blainville – QUB**

Longnose spurdog / Aiguillat-coq / كلب أبو شوكة مأنف قطاط بوشوكة  
Ad: 50 – 80 cm, occasionally until 1.1 m



Glo Med

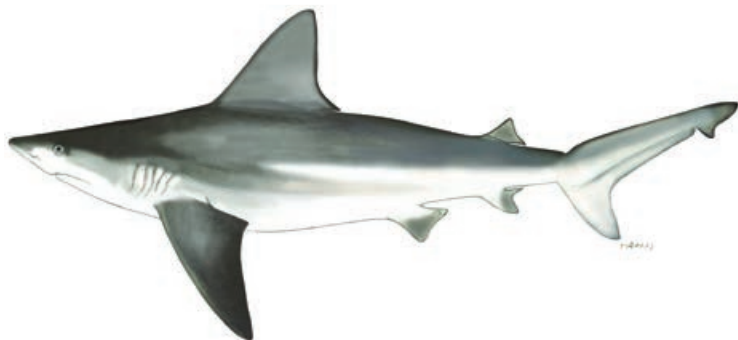


### **Squalus megalops – DOP**

Shortnose spurdog / Aiguillat nez court / قطاط بوشوكة  
Ad: less than 70 cm in total length (also 100 cm TL)



Glo Med



### **Carcharhinus plumbeus – CCP**

Sandbar shark / Requin gris / قرش رمادي (كلب بحر)  
Ad: up to 3 m



Glo Med

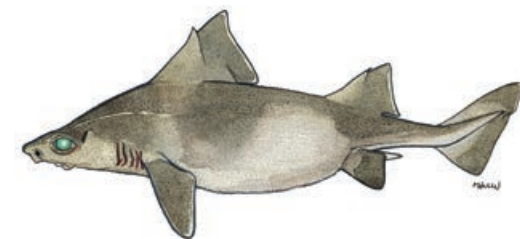


### **Isurus oxyrinchus – SMA**

Shortfin mako / Requin-taupe bleue / زرقابا (زرقابا)  
Ad: up to 4.5 m



Glo Med



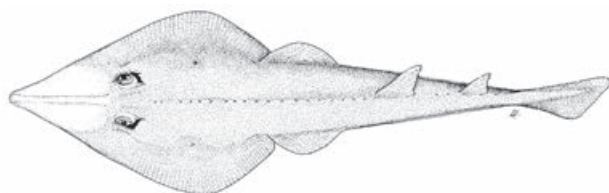
### **Oxynotus centrina – OXY**

Angular rough shark / Centrine commune / حمار البحر (نعجة)  
Ad: up to 1.5 m



Glo Med

## CHONDRICHTYANS



### *Glaucostegus cemiculus* – RBC

Blackchin guitarfish / Guitar de Mer fousseuse /  
قِيثَارَة سَوْدَاء الذَّقْن (مِحْرَاث / قِرْس)  
Ad: up to 2.42 m length



Glo Med



### *Hexanchus griseus* – SBL

Bluntnose six-gill shark / Requin gris /  
كَلَب أَبُو سِتَّة (الدُودَة)  
Ad: up to 5 m



Glo Med

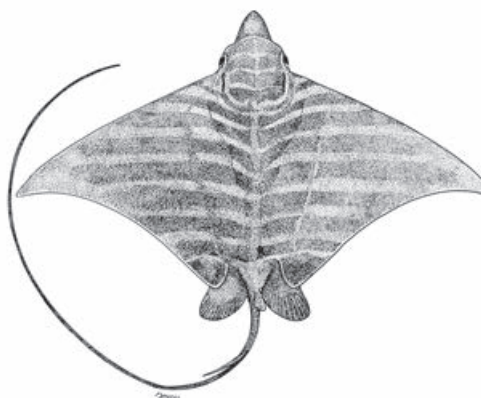


### *Squatina aculeata* – SUA

Sawback angelshark /  
Ange de mer épineux / (سِفْن / وَقَاص) /  
Ad: up to 1.9 m in total length



Glo Med

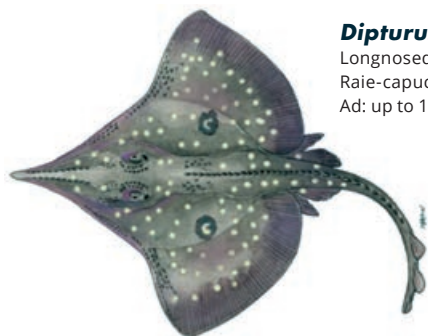


### *Aetomylaeus bovinus* – MPO

Bullray / Aigle Vachette / رَايَة بَقْرَة (البَقْرَة)  
Ad: Disc wide up to 2.2 m



Glo Med



### *Dipturus oxyrinchus* – RJO

Longnosed skate /  
Raie-capucin / قَرِشَلَا  
Ad: up to 1.5 m in total length



Glo Med

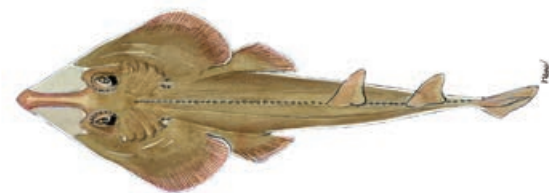


### *Squatina oculata* – SUT

Smoothback angelshark /  
Ange de mer ocellé / (سِفْن / وَقَاص)  
Ad: up to 1.6 m in total length



Glo Med

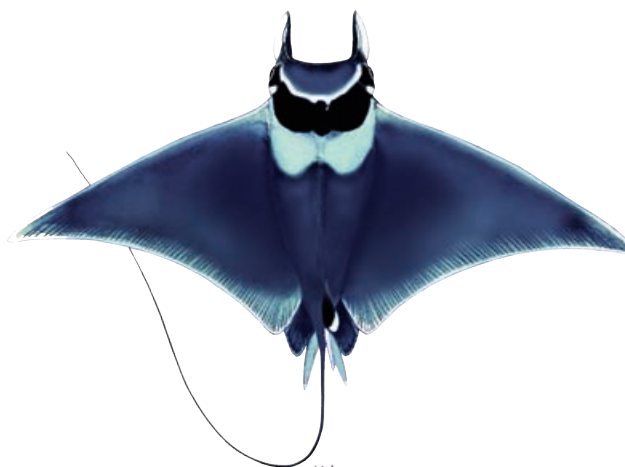


### *Rhinobatos rhinobatos* – RBC

Common guitarfish / Guitar de Mer commune /  
قِيثَارَة شَائِعَة (مِحْرَاث / قِرْس)  
Ad: 1.5 m in total length



Glo Med



### *Mobula mobular* – RMM

Devil fish / Diable de mer,  
Raie à oreilles / عَيْنُوفِي قَرْنُو  
Ad: Disc wide up to 5.2 m



Glo Med



### *Squatina squatina* – AGN

Angelshark / Ange de mer commun /  
(سِفْن / وَقَاص)  
Ad: up to 2.5 m

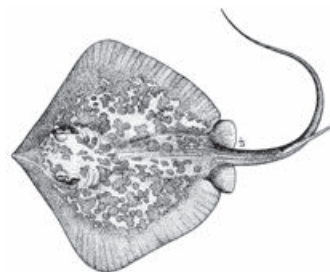


Glo Med

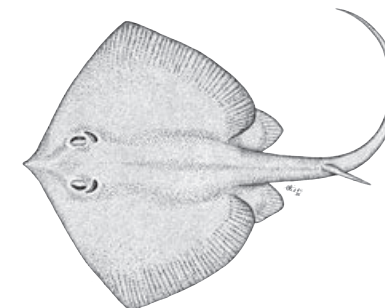
# CHONDRICHTYANS



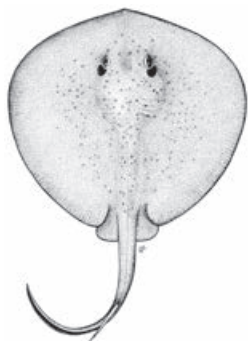
***Dasyatis pastinaca* – JDP** DD VU  
Common stingray / Rina /  
راية لاسعة شائعة (حمام)  
Ad: Disc wide up to 68 cm  
Glo Med



***Dasyatis marmorata* – RDQ** DD DD  
Marble stingray / Pastenague marbrée /  
راية رخامية لاسعة  
Ad: Disc wide up to 60 cm  
Glo Med



***Dasyatis tortonesei* – JDP** DD VU  
Tortonese's stingray / Pastenague  
de Tortonese / (حمام)  
Ad: Disc wide up to 84 cm  
Glo Med



***Taeniurops grabata* – RTB** DD DD  
Round fantail stingray /  
Pastenague africaina /  
(ترش)  
Ad: up to 80 cm in total length  
Glo Med



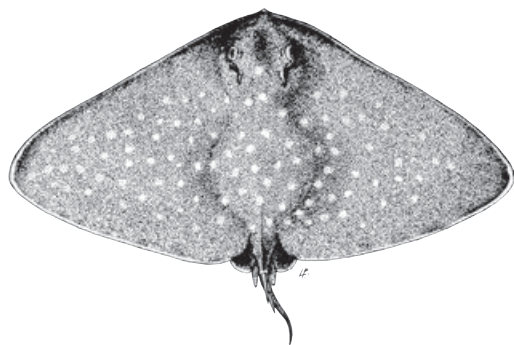
***Raja radula* – JAR** EN EN  
Rough ray / Ange de mer commun /  
راية خشنة (قرشلة)  
Ad: up to 70 cm in total length  
Glo Med



***Raja miraletus* – JAI** LC LC  
Brown ray / Raie miroir /  
راية إم عيون (قرشلة)  
Ad: up to 70cm in total length  
Glo Med



***Raja clavata* – RJC** NT NT  
Thornback ray / Raie bouclée /  
قرشلا او قرداش  
Ad: up to 90-130cm in total length  
Glo Med



***Gymnura altavela* – RGL** VU CR  
Spiny butterfly ray / Raie-papillon  
épineuse / راية الفراشة (حصيرة)  
Ad: Disc wide up to 4 m, common 2 m  
Glo Med



***Myliobatis aquila* – MYL** DD VU  
Common eagle ray /  
Aigle de mer / بقرة  
Ad: Disc wide up to 1.5 m  
Glo Med



***Torpedo torpedo* – TTV** DD LC  
Common torpedo / Torpille ocellée /  
راية حَلْفِيَّة (نعاس)  
Ad: 60 cm in total length  
Glo Med



***Torpedo marmorata* – TTR** DD LC  
Marbled electric ray /  
Torpille marbrée /  
راية مَرْمَرِيَّة (نعاس)  
Ad: up to 1 m in total length  
Glo Med

# SPONGES



## Massive keratose sponges – KERA



*Sarcotragus* sp.



*Sarcotragus* sp.



*Hippospongia communis*



*Ircinia variabilis*

## Globular sponges – GLOS



*Suberites domuncula*



*Tethya aurantium*



*Therea* spp.

## Massive Mediterranean stony sponge – PETR



*Petrosia ficiformis* (burgundy morph)



*Petrosia ficiformis* (white morph)

## Lamellate to cup-shaped sponges – LAMS



*Spongia lamella*



*Calyx nicaeensis*

## Arborescent sponges – ARBS



*Axinella* sp.

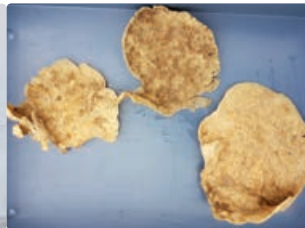


*Axinella cannabina*

## Fan-shaped sponges – FANS



*Phakellia ventilabrum*



*Phakellia robusta*

## Massive, (sub-) spherical hard sponges (*Geodia* spp.) – GEOD



*Geodia cydonium*

## Massive-tubular gold sponges (*Aplysina* spp.) – APLY



*Aplysina* spp.

## Lamellate rock sponges (*Leiodermatium* sp.) – ROCK



*Leiodermatium pfeifferae*

## Other massive sponges (to be recorded as "Other massive") – OTHR



*Agelas oroides*

## Birds' nest glass sponge – BIRD



*Pheronema carpenteri*

## Felt vase glass sponge – FELT



*Asconema setubalense*

**CORALS**

**Soft corals – SOFT**



*Alcyonium palmatum*

**Thick and tall red, yellow fan-shaped gorgonians – FANG**



*Acanthogorgia hirsuta*

*Paramuricea clavata*

VU

**Seapens – PENS**



*Pteroeides spinosum* and *Pennatula* spp.

**Bamboo corals – BAMB**



*Isidella elongata*

CR

**Bright yellow or salmon-pink hard corals (*Dendrophyllia* spp.) – DEND**



Dead *dendrophyllids*

*Dendrophyllia cornigera*

EN

*Dendrophyllia ramea*

VU

**Thin, delicate white, reddish, yellow fan-shaped gorgonians – THIG**



*Paramuricea macrospina*

**Precious red coral – REDC**



*Corallium rubrum*

EN

**Flexible white and salmon-pink fan-shaped gorgonians (*Eunicella* spp.) – EUNI**



*Eunicella cavolini*

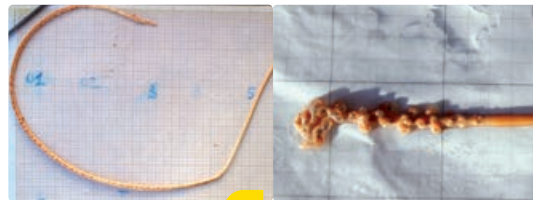
*Eunicella verrucosa*

**Salmon-pink, brittle fan-shaped gorgonians – CALL**



*Callogorgia verticillata*

**White, stem-like sea pens – STEM**



*Funiculina quadrangularis*

VU

*Kophobelemnion stelliferum*

**Candelabrum-shaped, red gorgonians – ELLP**



*Ellisella paraplexauroides*

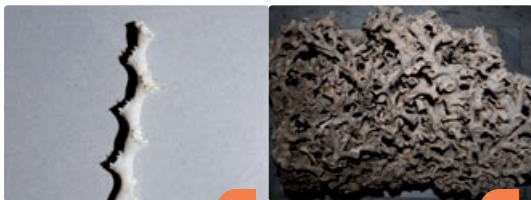
VU

**Tall, white or yellow whip gorgonians (*Viminella flagellum*) – VIMF**



*Viminella flagellum*

**White corals – WHIT**



*Madrepora oculata*

EN

*Lophelia pertusa*

EN

**Colonial hard corals – CLAD**



*Cladocora caespitosa*

EN

**Arborescent black corals – BLAC**



*Antipathella subpinnata*

*Parantipathes larix*

*Leiopathes glaberrima*

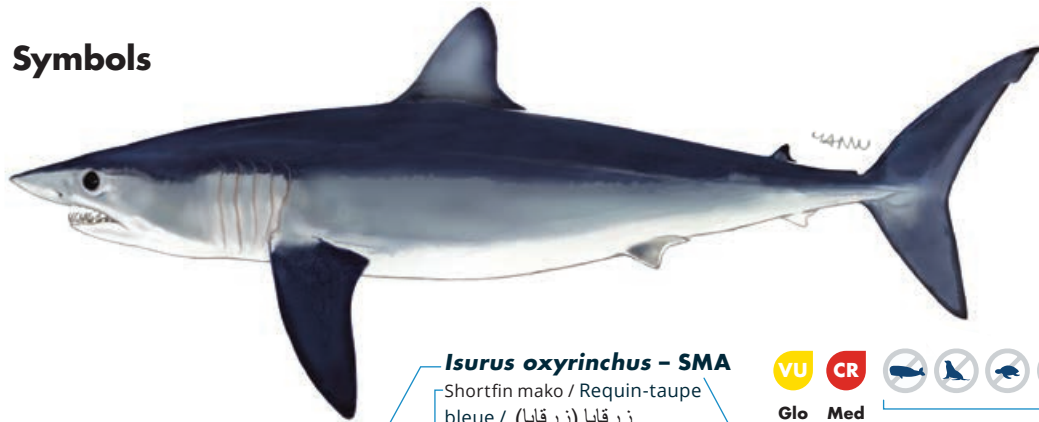
EN

*Antipathes dichotoma*

## Abbreviations

Ad: Adult  
 ♂: Male  
 ♀: Female  
 NB: New Born  
 W: Wingspan

## Symbols



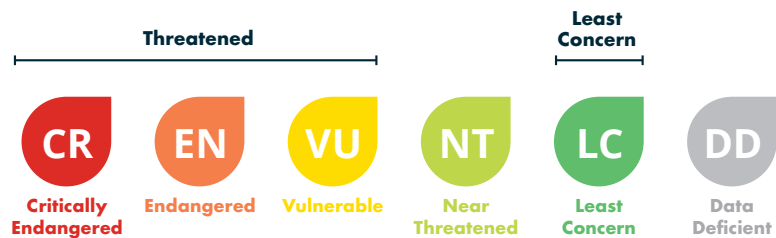
***Isurus oxyrinchus* – SMA**  
 Shortfin mako / Requin-taupe  
 bleue / زرقايا (زرقايا)  
 Ad: up to 4,5m

Scientific name | Common name in English, French and Arab | Species size given as total length or wingspan for Adults (Ad) or Females (♀), Males (♂) and New Born (NB) | Shorthand ASFIS code | IUCN Red Data List status at Global and Mediterranean | The species have to be released alive, it cannot be retained on board, transhipped, landed, transferred, stored, sold or displayed or offered for sale\*

**VU** **CR**  
 Glo Med

## Key to IUCN Red List category symbols

For each species sheets, the IUCN categories relating to the conservation status both globally (Glo) and Mediterranean (Med) level are reported, according to the following scheme:



Geographical subarea (GSA) 12 (Northern Tunisia), 13 (Gulf of Hammamet), 14 (Gulf of Gabes) refer to the Central Mediterranean Sea-North African coasts. If the incidentally caught species is not included in this guide, please refer to the **Identification guide of vulnerable species incidentally caught in Mediterranean fisheries**, which also provides detailed information on the conservation status, regulations and protection of each species (under ACCOBAMS, SPA/BD Protocol, CITES, CMS, GFCM, IUCN).

Illustration source of sharks and rays: FAO Original scientific illustrations archive. Reproduced with permission.

\* GFCM recommendations related to the management and conservation of vulnerable species in the GFCM area of application: seabirds (Rec. GFCM/35/2011/3); sea turtles (Rec. GFCM/35/2011/4); cetaceans (Rec. GFCM/36/2012/2; Res. GFCM/43/2019/2); sharks and rays (Rec. GFCM/36/2012/3; Rec. GFCM/42/2018/2) and corals (Res. GFCM/43/2019/6). National legislation: Annual bylaw relating to the organisation of hunting and bylaw of 28 September 1995 regulating the exercise of fishing by Ministry of Agriculture, Water Resources and Fisheries.



QR Code