

POCKET IDENTIFICATION GUIDE OF MAIN VULNERABLE SPECIES INCIDENTALLY CAUGHT IN TURKISH FISHERIES

Simplified guide adapted for Turkey (GSAs 22 and 24) from the Identification guide of vulnerable species incidentally caught in Mediterranean fisheries



MARINE MAMMALS



Stenella coeruleoalba

Striped dolphin /
Çizgili yunus
Ad: 1.8-2.6 m
NB: 85-95 cm



Glo Med



Grampus griseus

Risso's dolphin / Grampus
Ad: 3 - 4 m / NB: 1.2 - 1.5 m



Glo Med



Delphinus delphis

Common dolphin / Tirtak
♂: 2.0-2.6 m / ♀: 2.4 m /
NB: 80-90 cm



Glo Med



Tursiops truncatus

Common bottlenose dolphin /
Afalina
♂: 2.5 - 3.9 m
♀: 2.2-3.2
NB: 1-1.2 m



Glo Med



Physeter macrocephalus

Sperm whale / Kaşalot
♂: 16-18 m / ♀: 11-12 m / NB: 3.3-4.2 m



Glo Med



Ziphius cavirostris

Cuvier's beaked whale /
Gagalı balina
♂: up to 7.5 m
♀: up to 7 m
NB: 2-2.7 m



Glo Med



Phocoena phocoena

Harbour porpoise /
Mudur
♂: 1,8 m
♀: 2 m
NB: 50-70 cm



Glo



Balaenoptera acutorostrata

Common minke whale /
Mink Balinası
♂: 7 m / ♀: 7,30 m / NB: 2.4-2.8 m



Glo



Steno bredanensis

Rough-toothed dolphin /
Kabadişli yunus
Ad: 2.2 - 2.5 m / NB: 1m



Glo Med



Glo

Pseudorca crassidens

False killer whale / Yalancı katil balina
Ad: 3,7-5,5 m / NB: 1,8-2,1m



Globicephala melas

Long-finned pilot whale /
Siyah yunus
♂: 5.5-6.2 m / ♀: 4.5-5.5 m
NB: 1.7-1.8 m



Glo Med



Balaenoptera physalus

Fin whale / Uzun Balina
♂: 18-20 m / ♀: 20-22 m / NB: 6-6.5 m



Glo Med



Monachus monachus

Mediterranean monk seal / Akdeniz foku
♂: 2,51-2,90m / ♀: 2,42m / NB: 100 cm



Glo Med



*Mesoplodon densirostris**

Blainville's beaked whale / Dişli gagalı balinat
♂: 4,5m / ♀: 5,2m / NB: 2,1m



Glo

SEABIRDS



LC *Larus michahellis*
Yellow-legged gull / Gümüş Martı
Glo Wingspan: 120 – 140 cm



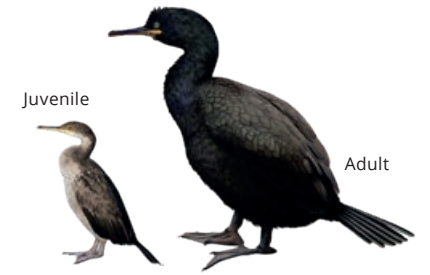
LC *Larus melanocephalus*
Mediterranean gull / Akdeniz martısı
Glo W: 94 – 102 cm



LC *Larus audouinii*
Audouin's gull / Ada martısı
Glo W: 117 – 128 cm



LC *Phalacrocorax carbo*
Great Cormorant / Karabatak
Glo W: 77 – 94 cm



LC *Gulosus aristotelis desmarestii*
European shag / Tepeli karabatak
Glo W: 115 – 125 cm



LC *Larus ridibundus*
Black-headed gull / karabaş martı
Glo W: 86 – 99 cm

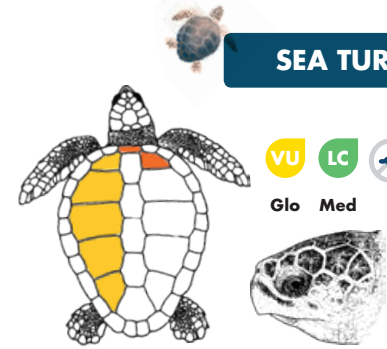


LC *Thalasseus sandvicensis*
Sandwich tern / Karagagalı sumru
Glo W: 85 – 97 cm



LC *Sterna hirundo*
Common Tern / Sumru
Glo W: 70 – 80 cm

SEA TURTLES



VU **LC**
Glo **Med**
Caretta caretta
Loggerhead turtle / Sini Kaplumbağası
♂: 75-80 cm; ♀: 66-85 cm



EN
Glo
Chelonia mydas
Green turtle / Yeşil kaplumbağa
Ad (♂ and ♀): 80-120 cm



VU *Puffinus yelkouan*
Yelkouan shearwater / Yelkovan
Glo W: 70 – 84 cm



LC *Calonectris diomedea*
Scopoli's shearwater / Boz yelkovan
Glo W: 112 – 122 cm



LC *Hydrobates pelagicus*
European storm petrel / Firtina kırlangıcı
Glo W: 37 – 41 cm

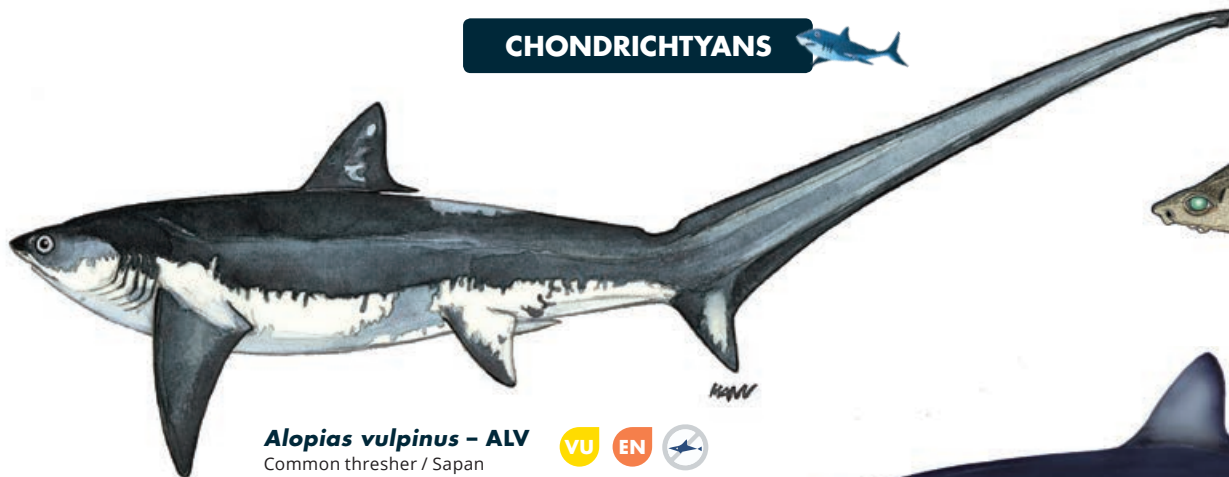


VU
Glo
Dermochelys coriacea
Leatherback sea turtle /
Deri sırtlı deniz kaplumbağası
Average adult length 1.4-1.6 m



VU **CR**
Glo **Med**
Trionyx triunguis
African softshell turtle /
Nil kaplumbağası
Ad: 50-95 cm

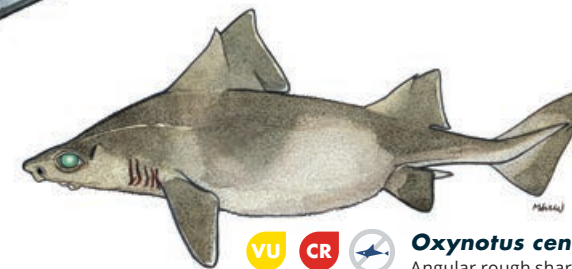
CHONDRICHTYANS



Alopias vulpinus - ALV
Common thresher / Sapan
Ad: up to 6 m

VU EN

Glo Med



VU CR

Glo Med

Oxynotus centrina - OXY
Angular rough shark / Domuz Balığı
Ad: up to 1,5 m



Centrophorus cf granulosus - GUP
Gulper shark / Yutucu köpekbalığı
Ad: up to 1,2 m

DD CR

Glo Med



Isurus oxyrinchus - SMA
Shortfin mako / Sivri burun harharyas
Ad: up to 4,5m

VU CR

Glo Med



Galeorhinus galeus - GAG
Tope shark / Camgöz balığı
Ad: up to 1,6m

VU VU

Glo Med



Rhinobatos rhinobatos - RBC
Common guitarfish / Uzun Kemane
Ad: up to 1,5m

EN EN

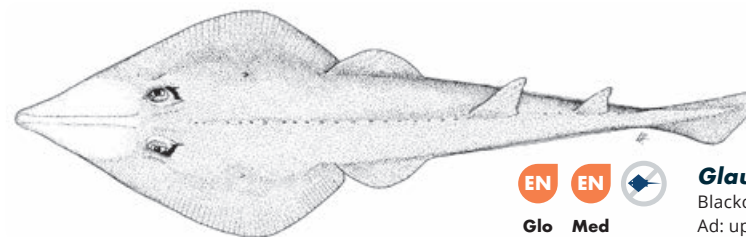
Glo Med



Hepttranchias perlo - HXT
Sharpnose sevengill shark /
Yedi yarıklı boz camgöz
Ad: up to 1,4m

NT DD

Glo Med



EN EN

Glo Med

Glaucostegus cemiculus - RBC
Blackchin guitarfish / Kemane
Ad: up to 2,42m

CHONDRICHTYANS



Leucoraja fullonica - RJF
Shagreen skate /
Telatin vatoz
Ad: up to 1,2m

VU CR
Glo Med



Leucoraja naevus - RJN
Cuckoo skate / Benli vatoz
Ad: up to 0,81m

LC NT
Glo Med



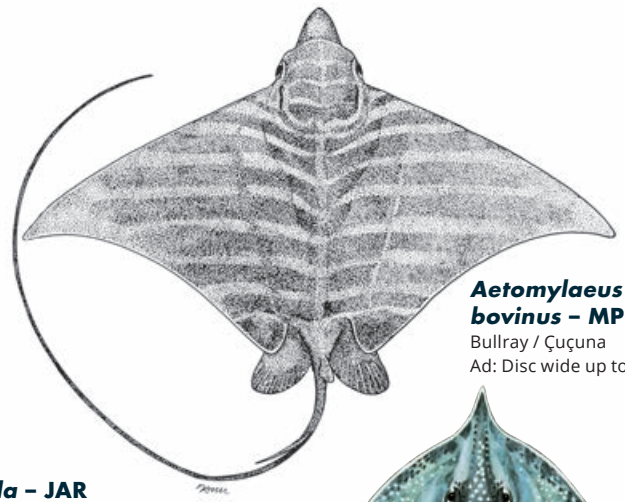
EN EN
Glo Med

Raja radula - JAR
Rough skate / Pürüzlü vatoz
Ad: up to 0,7m



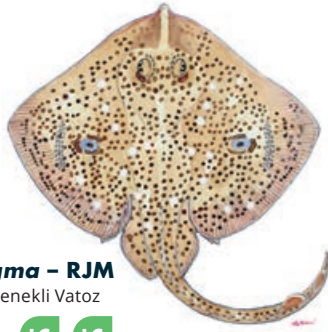
Aetomylaeus bovinus - MPO
Bullray / Çuçuna
Ad: Disc wide up to 2,2m

DD CR
Glo Med



Raja polystigma - RJM
Speckled skate / Benekli Vatoz
Ad: up to 0,7m

LC LC
Glo Med



Dasyatis pastinaca - JDP
Common stingray / Rina
Ad: Disc wide up to 0,68m

DD VU
Glo Med



Tetronarce nobiliana - TTO
Electric ray / Çarpan
Ad: up to 1,8m

DD LC
Glo Med



Rostroraja alba - RJA
White skate /
Beyaz Vatoz
Ad: up to 2,4m

EN EN
Glo Med



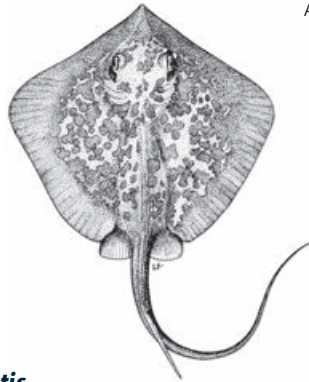
Raja undulata - RJU
Undulate skate /
Boyalı Vatoz
Ad: up to 1,14m

EN NT
Glo Med



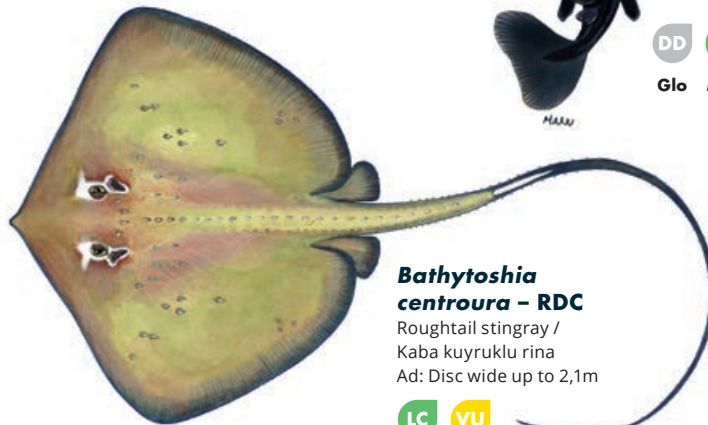
Dasyatis marmorata - RDQ
Marbled stingray /
Benekli rina
Ad: Disc wide up to 60cm

DD DD
Glo Med



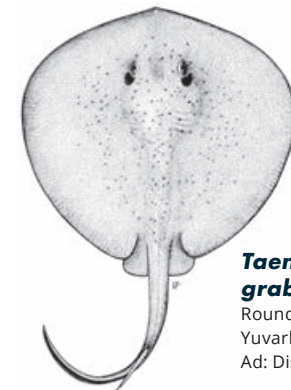
Bathytoshia centroura - RDC
Roughtail stingray /
Kaba kuyruklu rina
Ad: Disc wide up to 2,1m

LC VU
Glo Med



Taeniurops grabatus - RTB
Round stingray /
Yuvarlak Rina
Ad: Disc wide up to 0,8m

DD DD
Glo Med



SPONGES



Massive keratose sponges – KERA



Sarcotragus sp.



Sarcotragus sp.



Hippospongia communis



Ircinia variabilis

Globular sponges – GLOS



Suberites domuncula



Tethya aurantium



Therea spp.

Massive Mediterranean stony sponge – PETR



Petrosia ficiformis (burgundy morph)



Petrosia ficiformis (white morph)

Lamellate to cup-shaped sponges – LAMS



Spongia lamella



Calyx nicaeensis

Arborescent sponges – ARBS



Axinella sp.

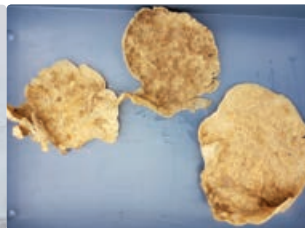


Axinella cannabina

Fan-shaped sponges – FANS



Phakellia ventilabrum



Phakellia robusta

Massive, (sub-) spherical hard sponges (*Geodia* spp.) – GEOD



Geodia cydonium

Massive-tubular gold sponges (*Aplysina* spp.) – APLY



Aplysina spp.

Lamellate rock sponges (*Leiodermatium* sp.) – ROCK



Leiodermatium pfeifferae

Other massive sponges (to be recorded as "Other massive") – OTHR



Agelas oroides

Birds' nest glass sponge – BIRD



Pheronema carpenteri

Felt vase glass sponge – FELT



Asconema setubalense

CORALS

Soft corals – SOFT



Alcyonium palmatum

Thick and tall red, yellow fan-shaped gorgonians – FANG



Acanthogorgia hirsuta

Paramuricea clavata

VU

Seapens – PENS



Pteroeides spinosum and *Pennatula* spp.

Bamboo corals – BAMB



Isidella elongata

CR

Bright yellow or salmon-pink hard corals (*Dendrophyllia* spp.) – DEND



Dead *dendrophyllids*

Dendrophyllia cornigera

EN

Dendrophyllia ramea

VU

Thin, delicate white, reddish, yellow fan-shaped gorgonians – THIG



Paramuricea macrospina

Precious red coral – REDC



Corallium rubrum

EN

Flexible white and salmon-pink fan-shaped gorgonians (*Eunicella* spp.) – EUNI



Eunicella cavolini

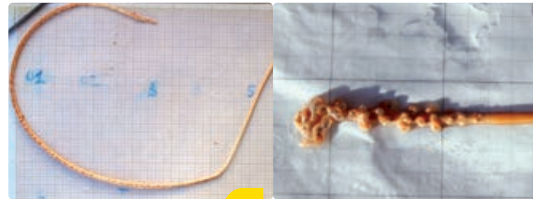
Eunicella verrucosa

Salmon-pink, brittle fan-shaped gorgonians – CALL



Callogorgia verticillata

White, stem-like sea pens – STEM

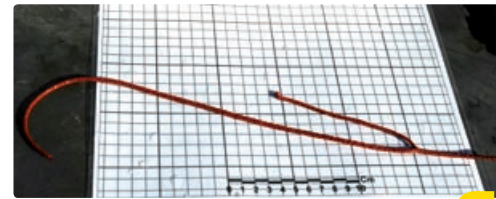


Funiculina quadrangularis

Kophobelemn stelliferum

VU

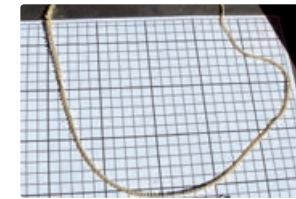
Candelabrum-shaped, red gorgonians – ELLP



Ellisella paraplexauroides

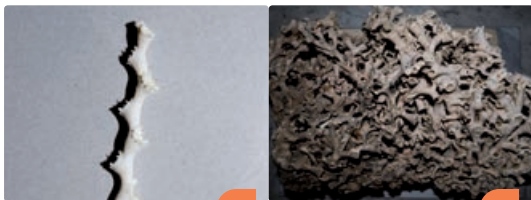
VU

Tall, white or yellow whip gorgonians (*Viminella flagellum*) – VIMF



Viminella flagellum

White corals – WHIT



Madrepora oculata

EN

Lophelia pertusa

EN

Colonial hard corals – CLAD



Cladocora caespitosa

EN

Arborescent black corals – BLAC



Antipathella subpinnata

Parantipathes larix

Leiopathes glaberrima

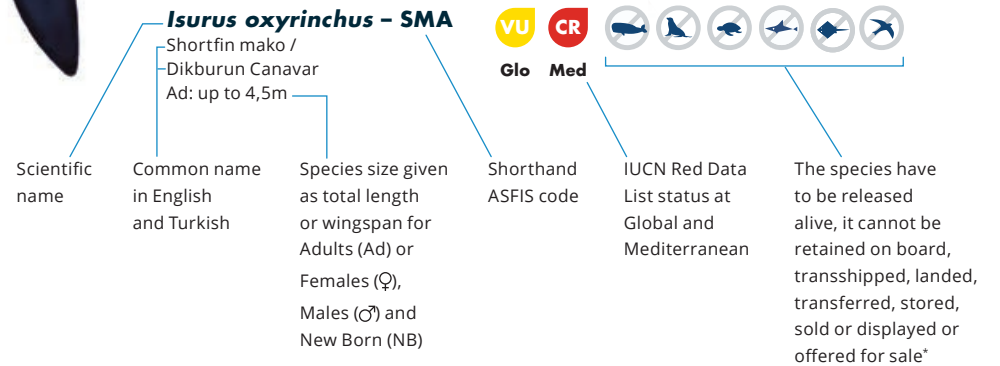
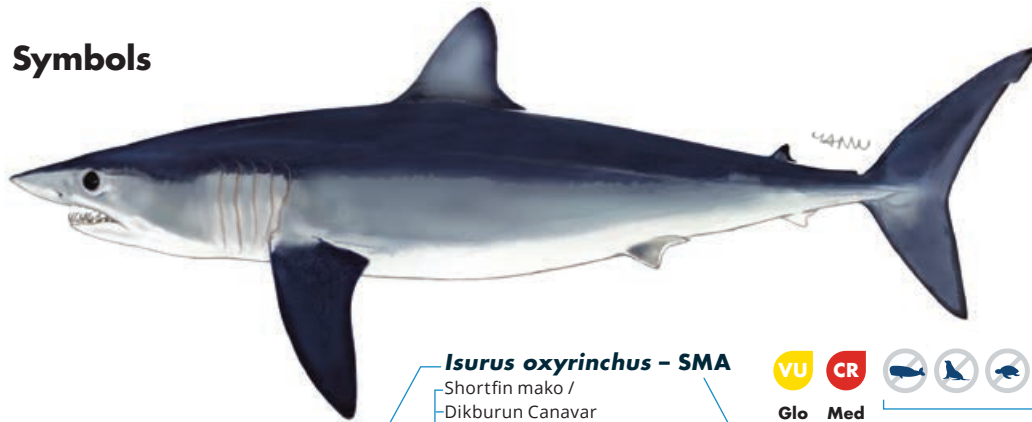
EN

Antipathes dichotoma

Abbreviations

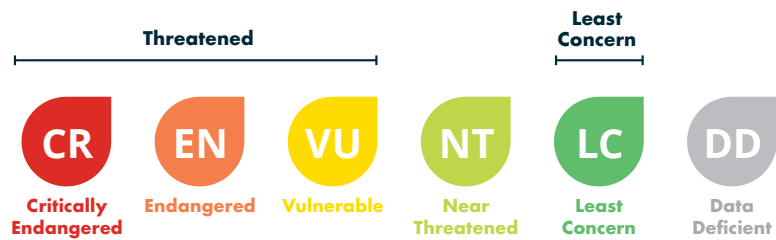
Ad: Adult
 ♂: Male
 ♀: Female
 NB: New Born
 W: Wingspan

Symbols



Key to IUCN Red List category symbols

For each species sheets, the IUCN categories relating to the conservation status both globally (Glo) and Mediterranean (Med) level are reported, according to the following scheme:



Geographical subarea (GSA) 22 refers to the Aegean Sea and GSA 24 to the Northern Levant Sea. If the incidentally caught species is not included in this guide, please refer to the **Identification guide of vulnerable species incidentally caught in Mediterranean fisheries**, which also provides detailed information on the conservation status, regulations and protection of each species (under ACCOBAMS, SPA/BD Protocol, CITES, CMS, GFCM, IUCN).
 FAO Original scientific illustrations archive. Reproduced with permission.

* GFCM recommendations related to the management and conservation of vulnerable species in the GFCM area of application: seabirds (Rec. GFCM/35/2011/3); sea turtles (Rec. GFCM/35/2011/4); cetaceans (Rec. GFCM/36/2012/2; Res. GFCM/43/2019/2); sharks and rays (Rec. GFCM/36/2012/3; Rec. GFCM/42/2018/2) and corals (Res. GFCM/43/2019/6).
 Central Hunting Commission of Turkey 2019-2020 Resolutions



QR Code