

# POCKET IDENTIFICATION GUIDE OF MAIN VULNERABLE SPECIES INCIDENTALLY CAUGHT IN MOROCCAN FISHERIES

Simplified guide adapted for Morocco (GSA 3) from the Identification guide of vulnerable species incidentally caught in Mediterranean fisheries



IN COLLABORATION WITH



FUNDED BY



## MARINE MAMMALS



### *Stenella coeruleoalba*

Striped dolphin /  
الدلفين الأزرق والأبيض (المخطط)  
Ad: 1.8-2.6 m  
NB: 85-95 cm



Glo Med



### *Grampus griseus*

Risso's dolphin /  
دلفين ريسو (غرامبوس)  
Ad: 3 - 4 m / NB: 1.2 - 1.5 m



Glo Med



### *Delphinus delphis*

Common dolphin /  
الدلفين الشائع  
♂: 2.0-2.6 m / ♀: 2.4 m /  
NB: 80-90 cm



Glo Med



### *Globicephala melas*

Long-finned pilot whale /  
كروي الرأس الشائع (الحوث القاتم)  
♂: 5.5-6.2 m / ♀: 4.5-5.5 m  
NB: 1.7-1.8 m



Glo Med



### *Tursiops truncatus*

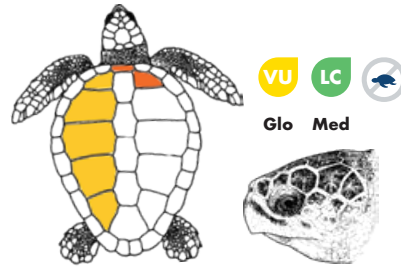
Common bottlenose dolphin /  
الدلفين الكبير (ذو الأنف الزجاجي)  
♂: 2.5 - 3.9 m / ♀: 2.2-3.2  
NB: 1-1.2 m



Glo Med



## SEA TURTLES



Glo Med

### *Caretta caretta*

Loggerhead turtle / سلحفاة بحرية ضخمة الرأس  
♂: 75-80 cm; ♀: 66-85 cm



Glo

### *Chelonia mydas*

Green turtle / السلحفاة الخضراء  
Ad (♂ and ♀): 80-120 cm



Glo

### *Dermochelys coriacea*

Leatherback sea turtle /  
سلحفاة المحيط جلدية الظهر  
Average adult length 1.4-1.6 m



## SEABIRDS



Winter

Summer



### *Larus michahellis*

Yellow-legged gull /  
نورس ميكاهيل  
Wingspan: 1.2 - 1.4 m

Glo



Winter

Summer



### *Larus melanocephalus*

Mediterranean gull /  
نورس متوسطي  
W: 94 - 102 cm

Glo



Winter

Summer



### *Larus audouinii*

Audouin's gull /  
نورس أودوين  
W: 1.17 - 1.28 m

Glo



Winter

Summer



### *Larus ridibundus*

Black-headed gull /  
نورس أسود الرأس  
W: 86 - 99 cm

Glo



Juvenile

Adult



### *Larus fuscus*

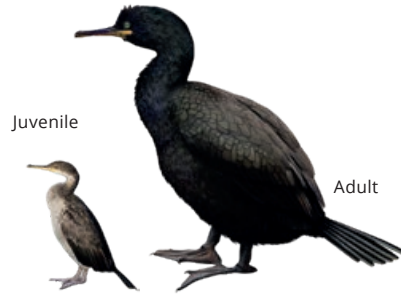
Lesser black-backed gull /  
نورس أسمر  
W: 1.44 - 1.66 m

Glo

SEABIRDS



**LC** *Phalacrocorax carbo*  
Great Cormorant / غاق كبير  
**Glo** W: 77 – 94 cm



**LC** *Gulosus aristotelis desmarestii*  
European shag / غاق أرسطو  
**Glo** W: 1.15 – 1.25 m



**VU** *Puffinus yelkouan*  
Yelkouan shearwater / جلم ماء متوسطي  
**Glo** W: 70 – 84 cm



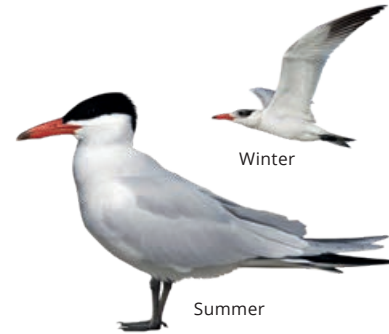
**CR** *Puffinus mauretanicus*  
Balearic shearwater / جلم ماء موريطاني  
**Glo** W: 78 – 90 cm



**LC** *Calonectris diomedea*  
Scopoli's shearwater / جلم ماء سكوبولي  
**Glo** W: 1.12 – 1.22 m



**LC** *Hydrobates pelagicus*  
European storm petrel / AR: NA  
**Glo** W: 37 – 41 cm



**LC** *Hydroprogne caspia*  
Caspian tern / خرشنة قزوينية  
**Glo** W: 96 – 111 cm



**LC** *Thalasseus sandvicensis*  
Sandwich tern / خرشنة ساندويتش  
**Glo** W: 85 – 97 cm



**LC** *Thalasseus bengalensis*  
Lesser crested tern / خرشنة البنغال  
**Glo** W: 76 – 82 cm



**LC** *Sternula albifrons*  
Little tern / خرشنة صغيرة  
**Glo** W: 41- 47 cm



**LC** *Sterna hirundo*  
Common tern / خرشنة خطافية  
**Glo** W: 70 – 80 cm



**Mustelus asterias – SDS**

Starry smooth-hound shark /  
كلب نجمي (قطاط)  
Ad: up to 1.4 m

LC VU  
Glo Med



**Prionace glauca – BSH**

Blue shark / قرش أزرق (كلب بحر)  
Ad: up to 4 m

NT CR  
Glo Med



**Galeorhinus galeus – GAG**

Tope shark / مُتسوّلة (قطاط)  
Ad: up to 1.6 m

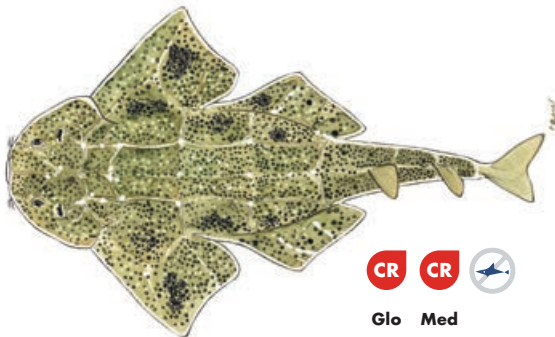
VU VU  
Glo Med



**Scyliorhinus canicula – SYC**

Small-spotted catshark / قِط صغير مبرقش (كاتارلي / نمر)  
Ad: up to 1 m (60 cm in Mediterranean)

LC LC  
Glo Med

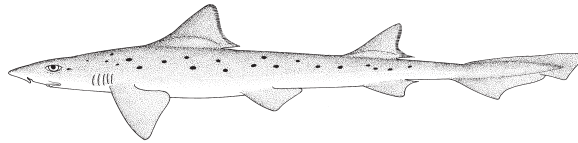


**Squatina squatina – AGN**

Angelshark / ملاك شائع (سفن وقاص)  
Ad: up to 2.5 m total length

CR CR  
Glo Med

**CHONDRICHTYANS**



**Mustelus punctulatus – MPT**

Blackspotted smooth-hound /  
كلب مُنقَط (قطاط)  
Ad: up to 1.9 m

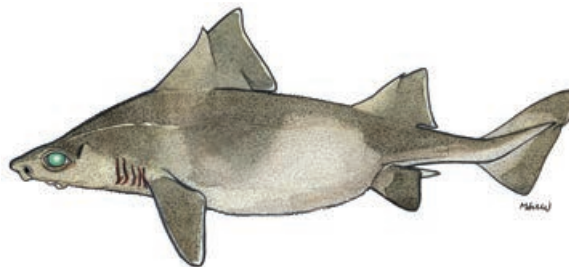
DD VU  
Glo Med



**Carcharhinus plumbeus – CCP**

Sandbar shark / قرش رمادي (كلب بحر)  
Ad: up to 3 m

VU EN  
Glo Med



**Oxynotus centrina – OXY**

Angular rough shark /  
حمار البحر (نعجة)  
Ad: up to 1.5 m

VU CR  
Glo Med



**Dalatias licha – SCK**

Kitefin shark / كوسج شراعي الزعنفة  
Ad: up to 1.82 m

VU VU  
Glo Med



**Isurus oxyrinchus – SMA**

Shortfin mako /  
زرقايا (زرقايا)  
Ad: up to 4.5 m

VU CR  
Glo Med



**Sphyrna zygaena – SPZ**

Smooth hammerhead /  
أبو مطرقة ناعم (قرش بومطرقة)  
Ad: up to 5 m

VU CR  
Glo Med



**Squalus blainville – QUB**

Longnose spurdog /  
كلب أبو شوكة مُتأنف قطاط بوشوكة  
Ad: 50 – 80 cm in total length,  
occasionally until 1.1 m

DD DD  
Glo Med

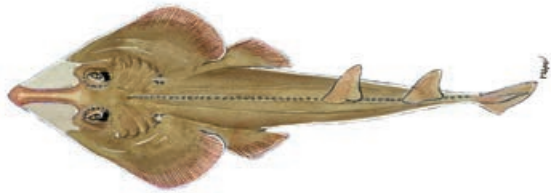


**Hexanchus griseus – SBL**

Bluntnose six-gill shark / كلب أبو ستة (الدودة)  
Ad: up to 5 m

NT DD  
Glo Med

## CHONDRICHTYANS



### *Rhinobatos rhinobatos* - RBC

Common guitarfish /  
قيثارة شائعة (محرث / قرس)  
Ad: 1.5 m in total length



Glo Med



### *Pteroplatytrygon violacea* - PLS

Pelagic stingray /  
راية لاسعة بنفسجية (الزرقايا)  
Ad: Disc wide up to 80 cm



Glo Med

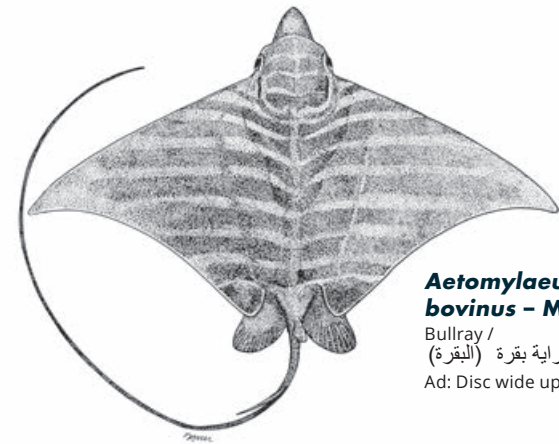


### *Dasyatis pastinaca* - JDP

Common stingray /  
راية لاسعة شائعة (حمام)  
Ad: Disc wide up to 68 cm



Glo Med



### *Aetomylaeus bovinus* - MPO

Bullray /  
راية بقرة (البقرة)  
Ad: Disc wide up to 2.2 m



Glo Med

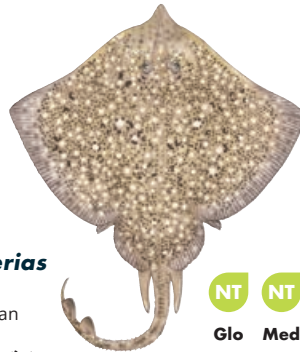


### *Glaucostegus halavi* - RBH

Halavi ray /  
قيثارة شائعة (محرث / قرس)  
Ad: 1.2 m in total length  
(probably up to 1.71 m)



Glo

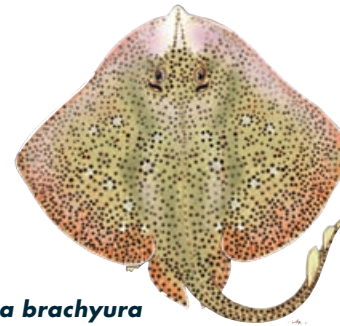


### *Raja asterias* - JRS

Mediterranean  
starry ray /  
راية مية (قرشلة)  
Ad: up to 80 cm in total length



Glo Med

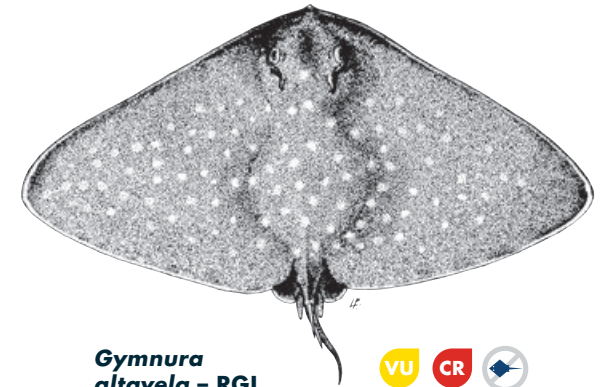


### *Raja brachyura* - RJH

Blonde ray / AR: NA  
Ad: up to 1.2 m  
in total length



Glo Med



### *Gymnura altavela* - RGL

Spiny butterfly ray /  
راية الفراشة (حصيرة)  
Ad: Disc wide up to 4 m, common 2 m



Glo Med



### *Leucoraja circularis* - RJL

Sandy ray / راية رملية  
Ad: up to 1.2 m total length



Glo Med



### *Raja miraletus* - JAI

Brown ray / راية ام عيون (قرشلة)  
Ad: up to 70 cm in total length



Glo Med



### *Raja montagui* - RJM

Spotted ray / راية مبرقشة  
Ad: up to 80 cm in total length



Glo Med



### *Raja clavata* - RJC

Thornback ray /  
راية مشوكة الظهر (قرشلة)  
Ad: up to 90-130 cm in total length



Glo Med

# SPONGES



## Massive keratose sponges – KERA



*Sarcotragus* sp.



*Sarcotragus* sp.



*Hippospongia communis*



*Ircinia variabilis*

## Globular sponges – GLOS



*Suberites domuncula*



*Tethya aurantium*



*Therea* spp.

## Massive Mediterranean stony sponge – PETR



*Petrosia ficiformis* (burgundy morph)



*Petrosia ficiformis* (white morph)

## Lamellate to cup-shaped sponges – LAMS



*Spongia lamella*



*Calyx nicaeensis*

## Arborescent sponges – ARBS



*Axinella* sp.

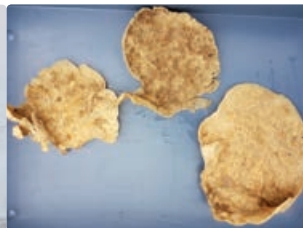


*Axinella cannabina*

## Fan-shaped sponges – FANS



*Phakellia ventilabrum*



*Phakellia robusta*

## Massive, (sub-) spherical hard sponges (*Geodia* spp.) – GEOD



*Geodia cydonium*

## Massive-tubular gold sponges (*Aplysina* spp.) – APLY



*Aplysina* spp.

## Lamellate rock sponges (*Leiodermatium* sp.) – ROCK



*Leiodermatium pfeifferae*

## Other massive sponges (to be recorded as "Other massive") – OTHR



*Agelas oroides*

## Birds' nest glass sponge – BIRD



*Pheronema carpenteri*

## Felt vase glass sponge – FELT



*Asconema setubalense*

**CORALS**

**Soft corals – SOFT**



*Alcyonium palmatum*

**Thick and tall red, yellow fan-shaped gorgonians – FANG**



*Acanthogorgia hirsuta*

*Paramuricea clavata*

VU

**Seapens – PENS**



*Pteroeides spinosum* and *Pennatula* spp.

**Bamboo corals – BAMB**



*Isidella elongata*

CR

**Bright yellow or salmon-pink hard corals (*Dendrophyllia* spp.) – DEND**



Dead *dendrophyllids*

*Dendrophyllia cornigera*

EN

*Dendrophyllia ramea*

VU

**Thin, delicate white, reddish, yellow fan-shaped gorgonians – THIG**



*Paramuricea macrospina*

**Precious red coral – REDC**



*Corallium rubrum*

EN

**Flexible white and salmon-pink fan-shaped gorgonians (*Eunicella* spp.) – EUNI**



*Eunicella cavolini*

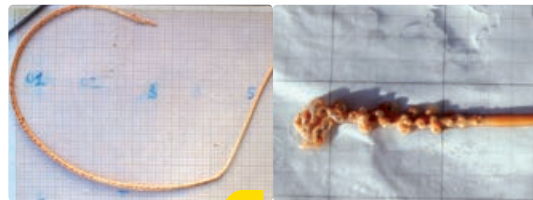
*Eunicella verrucosa*

**Salmon-pink, brittle fan-shaped gorgonians – CALL**



*Callogorgia verticillata*

**White, stem-like sea pens – STEM**

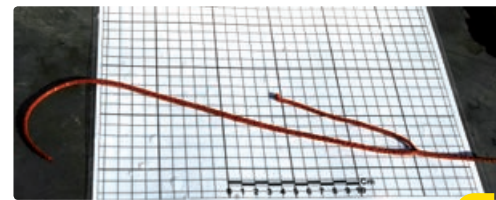


*Funiculina quadrangularis*

*Kophobelemnion stelliferum*

VU

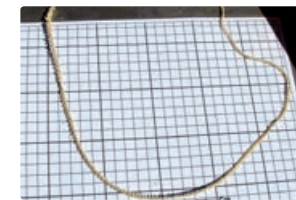
**Candelabrum-shaped, red gorgonians – ELLP**



*Ellisella paraplexauroides*

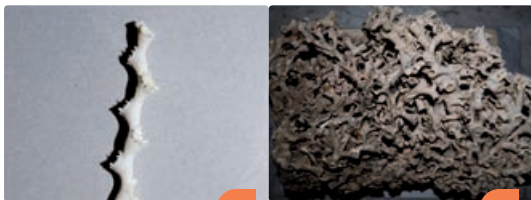
VU

**Tall, white or yellow whip gorgonians (*Viminella flagellum*) – VIMF**



*Viminella flagellum*

**White corals – WHIT**



*Madrepora oculata*

EN

*Lophelia pertusa*

EN

**Colonial hard corals – CLAD**



*Cladocora caespitosa*

EN

**Arborescent black corals – BLAC**



*Antipathella subpinnata*

*Parantipathes larix*

*Leiopathes glaberrima*

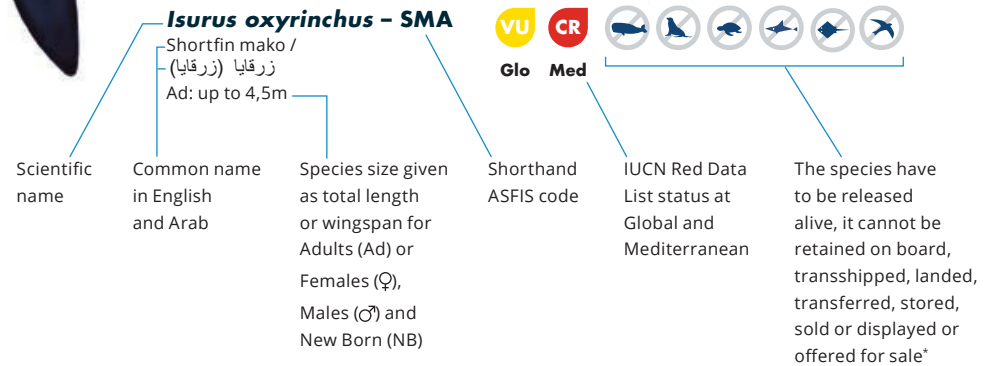
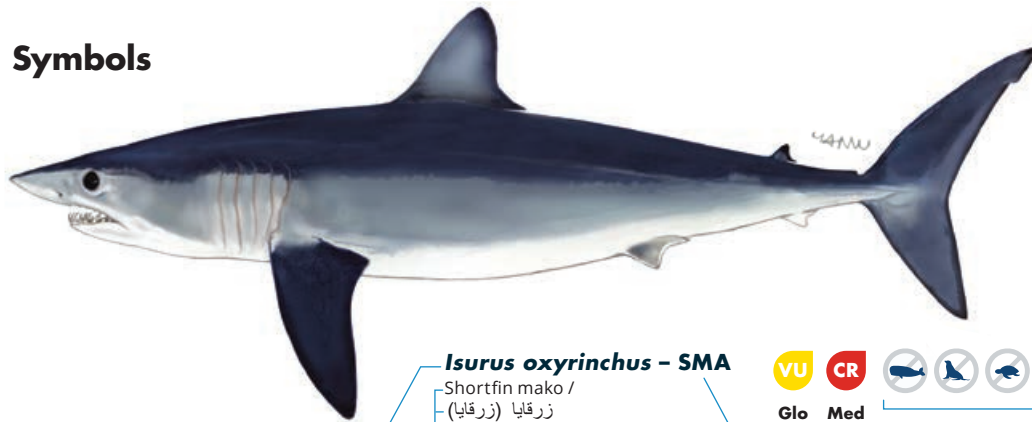
EN

*Antipathes dichotoma*

## Abbreviations

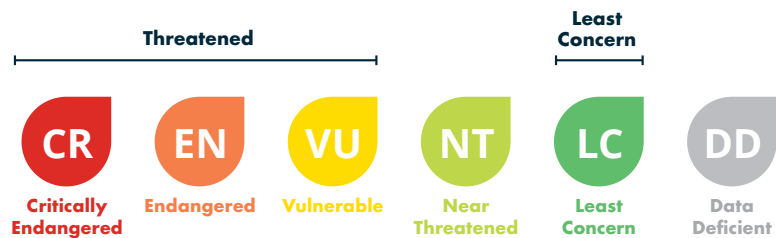
Ad: Adult  
 ♂: Male  
 ♀: Female  
 NB: New Born  
 W: Wingspan

## Symbols



## Key to IUCN Red List category symbols

For each species sheets, the IUCN categories relating to the conservation status both globally (Glo) and Mediterranean (Med) level are reported, according to the following scheme:



Geographical subarea (GSA) 3 refers to Southern Alboran Sea. If the incidentally caught species is not included in this guide, please refer to the **Identification guide of vulnerable species incidentally caught in Mediterranean fisheries**, which also provides detailed information on the conservation status, regulations and protection of each species (under ACCOBAMS, SPA/BD Protocol, CITES, CMS, GFCM, IUCN).  
 Illustration source of sharks and rays: FAO Original scientific illustrations archive. Reproduced with permission.

\* GFCM recommendations related to the management and conservation of vulnerable species in the GFCM area of application: seabirds (Rec. GFCM/35/2011/3); sea turtles (Rec. GFCM/35/2011/4); cetaceans (Rec. GFCM/36/2012/2; Res. GFCM/43/2019/2); sharks and rays (Rec. GFCM/36/2012/3; Rec. GFCM/42/2018/2) and corals (Res. GFCM/43/2019/6).  
 National legislation: Annual bylaw relating to the organisation of hunting and bylaw of 28 September 1995 regulating the exercise of fishing by Ministry of Agriculture, Water Resources and Fisheries.



QR Code